

## Two-Way Ball Valves Series 14



14-S

DN: 1" to 20"  
PN: ANSI Class 150/600  
Temp.: -40°C to 250°C



14-M

DN: 1" to 20"  
PN: ANSI Class 150/600  
Temp.: -40°C to 550°C



14-C

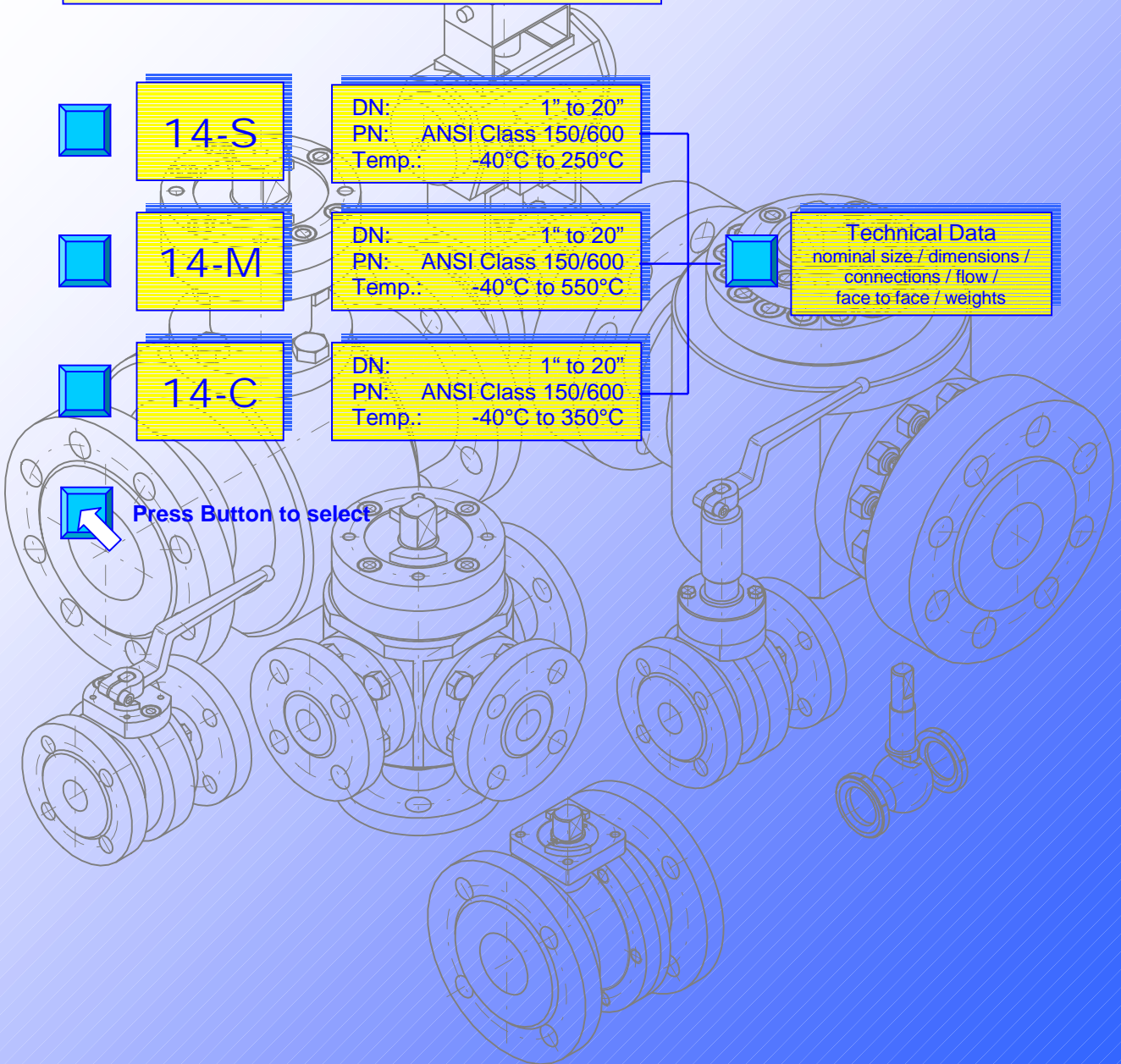
DN: 1" to 20"  
PN: ANSI Class 150/600  
Temp.: -40°C to 350°C



Technical Data  
nominal size / dimensions /  
connections / flow /  
face to face / weights

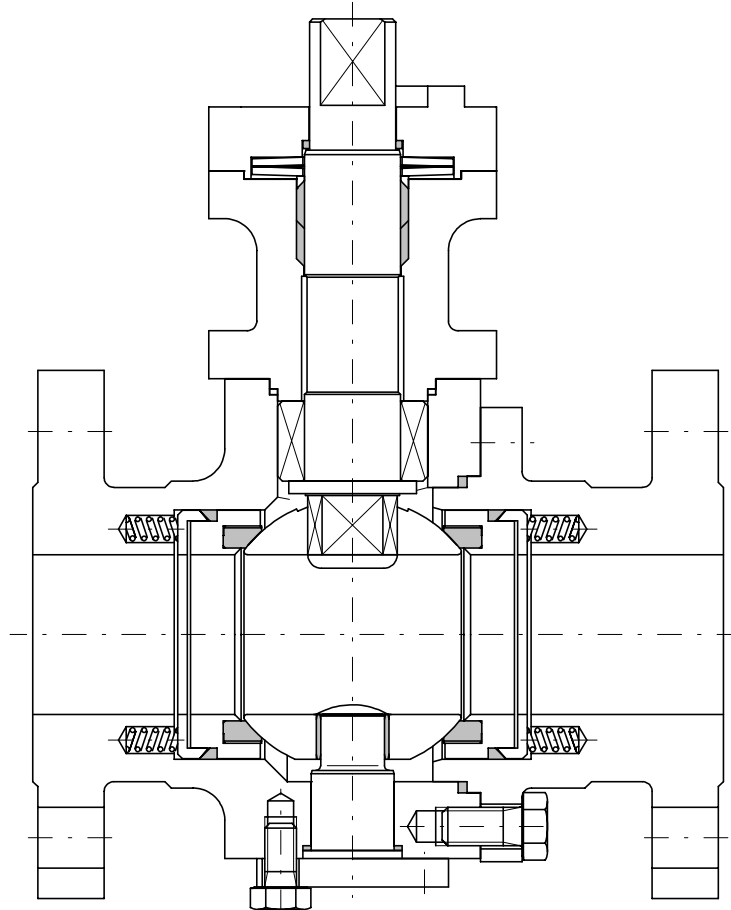


Press Button to select



# Two-Way Ball Valve Series 14-S

DN 1" to 20"



## Description:

This PERRIN ball valve design features a two piece, bolted body and a trunnion mounted ball. The seat system and the stem packing are spring loaded, resulting in very good sealing properties and a constant torque not influenced by temperature fluctuations.

The actuator mounting flange corresponds to the NAMUR recommendations with dimensions to DIN/ISO 5211.

Stem extensions, locking devices and actuators with accessoires can be field mounted at any time. The

The ball valve is extradited in antistatic-design, with anti blowout proof stem and, as desired, in "fire-safe design". The stem packing has examined TA-Luft.

## Range of application:

DN 1" to 20"	PN ANSI Cl. 150/600	Temperature -40°C to 250°C
-----------------	------------------------	-------------------------------

## 1.0 Main parts

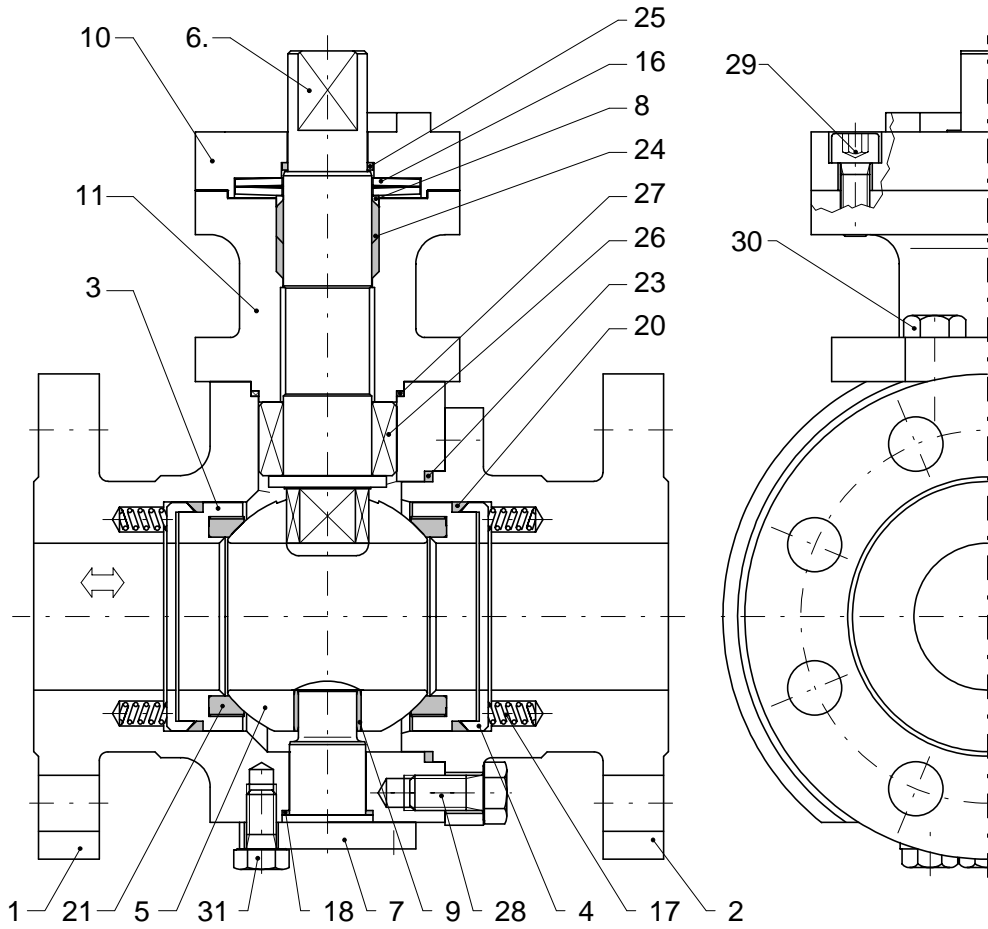


fig. 1  
ball valve, series 14-S

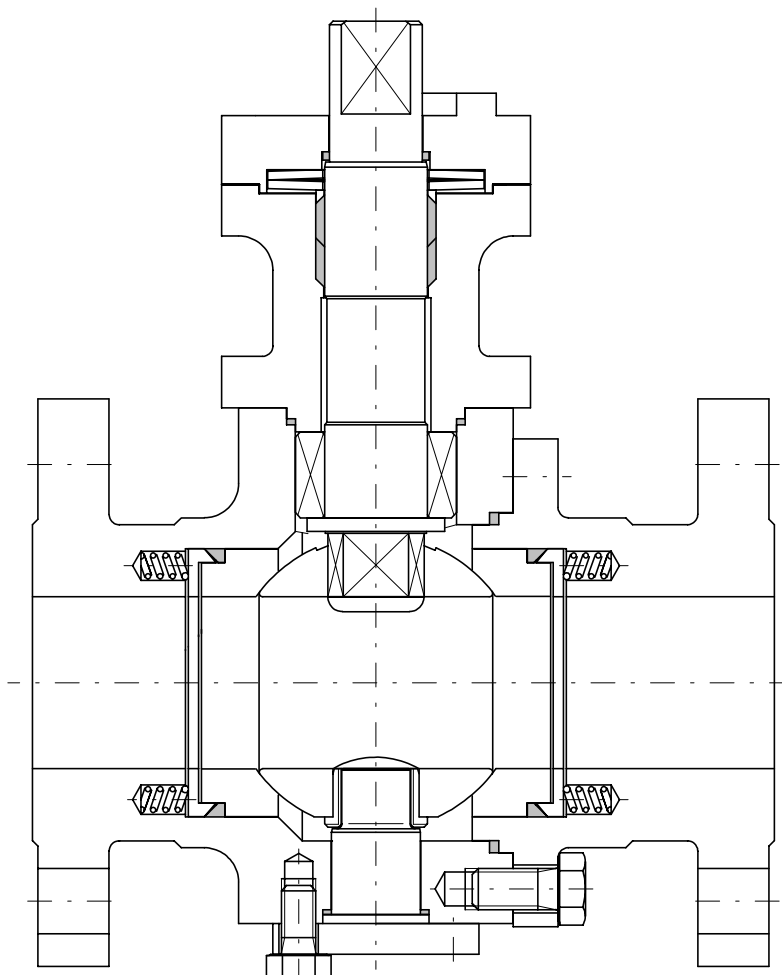
Technical modifications are reserved.

item	designation	temperatures:	
		-40°C to 250°C <sup>1)</sup>	-10°C to 250°C <sup>1)</sup>
1	body	1.4571 / 1.4408	1.0460 / 1.0619
2	body end connection		
3-4	retainer ring	1.4571	1.4571
5	ball	1.4571 / 1.4404 / 1.4408	1.4571 / 1.4404 / 1.4408
6	stem	1.4571	1.4571
7	lower trunnion		
8	gland washer		
9	bearing bush	PEEK	PEEK
10	bearing cover	1.4571	1.0460
11	extension		
16	plate spring	1.4568	1.8159
17	coil spring	1.4571	1.4571
18	body gasket	PTFE - TFM	PTFE - TFM
20	sealing ring		
21	seat ring		
23	body gasket		
24	stem packing	PTFE - Graphite	PTFE - Graphite
25	bearing ring	PTFE - 25% Glass	PTFE - 25% Glass
26	bearing	PEEK	PEEK
27	body gasket	PTFE - TFM	PTFE - TFM
28-31	screw	A 2-70	A 2-70

1) Materials for lower/higher temperatures on request..

# Two-Way Ball Valve Series 14-M

DN 1" to 20"



## Description:

This PERRIN ball valve design features a two piece, bolted body and a trunnion mounted ball. The metallic seat system and the stem packing are spring loaded, resulting in very good sealing properties and a constant torque not influenced by temperature fluctuations.

The actuator mounting flange corresponds to the NAMUR recommendations with dimensions to DIN/ISO 5211.

Stem extensions, locking devices and actuators with accessoires can be field mounted at any time. The

The ball valve is extruded in antistatic-design, with anti blowout proof stem and in "fire-safe design". The stem packing has examined TA-Luft

## Range of application:

DN 1" to 20"	PN ANSi Cl. 150/600	Temperature -40°C to 550°C
-----------------	------------------------	-------------------------------

## 1.0 Main parts

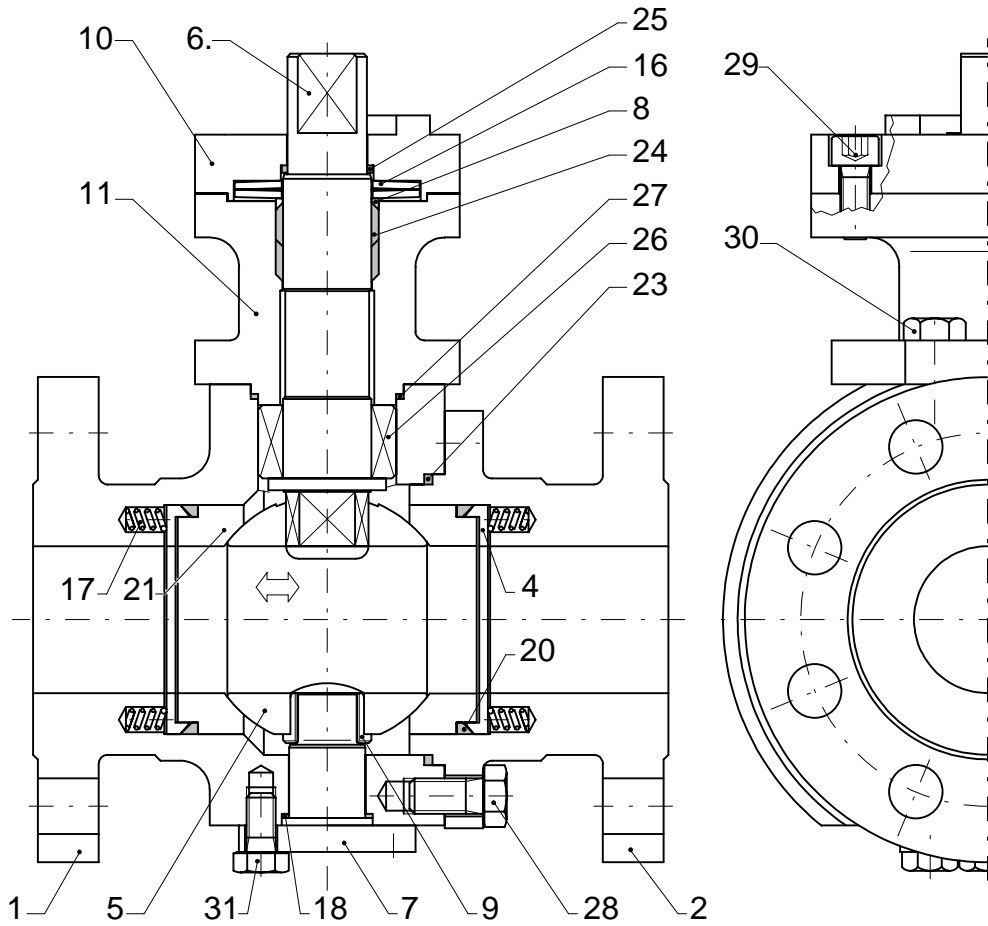


fig. 1  
ball valve, series 14-M

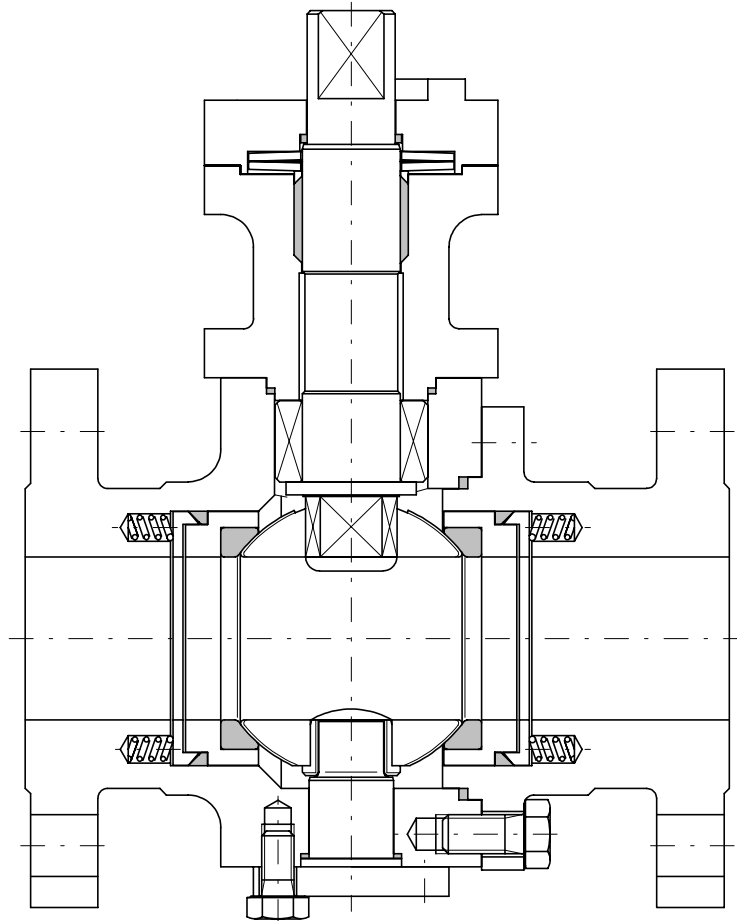
Technical modifications are reserved.

item	designation	temperatures:	
		-40°C to 550°C <sup>1)</sup>	-10°C to 450°C <sup>1)</sup>
1	body	1.4571 / 1.4408	1.0460 / 1.0619
2	body end connection		
4	retainer ring	1.4571	1.4571
5	ball	1.4571 / 1.4404 / 1.4408	1.4571 / 1.4404 / 1.4408
6	stem	1.4571	1.4571
7	lower trunnion	1.4571 coated	1.4571 coated
8	gland washer	1.4571	1.4571
9	bearing bush	1.4571 coated	1.4571 coated
10	bearing cover	1.4571	1.0460
11	extension		
16	plate spring	1.4568	1.8159
17	coil spring	1.4571	1.4571
18	body gasket	Graphite	Graphite
20	sealing ring		
21	seat ring	1.4571 coated	1.4571 coated
23	body gasket	Graphite	Graphite
24	stem packing		
25	bearing ring	PTFE - 25% Glass	PTFE - 25% Glass
26	bearing	Carbon-Antimon	Carbon-Antimon
27	body gasket	Graphite	Graphite
28-31	screw	A 2-70	A 2-70

1) Materials for lower/higher temperatures on request..

# Two-Way Ball Valve Series 14-C

DN 1" to 20"



## Description:

This PERRIN ball valve design features a two piece, bolted body and a trunnion mounted ball. The carbon seat system and the stem packing are spring loaded, resulting in very good sealing properties and a constant torque not influenced by temperature fluctuations.

The actuator mounting flange corresponds to the NAMUR recommendations with dimensions to DIN/ISO 5211.

Stem extensions, locking devices and actuators with accessoires can be field mounted at any time. The

The ball valve is extruded in antistatic-design, with anti blowout proof stem and in "fire-safe design". The stem packing has examined TA-Luft

## Range of application:

DN 1" to 20"	PN ANSI Cl. 150/600	Temperature -40°C to 350°C
-----------------	------------------------	-------------------------------

## 1.0 Main parts

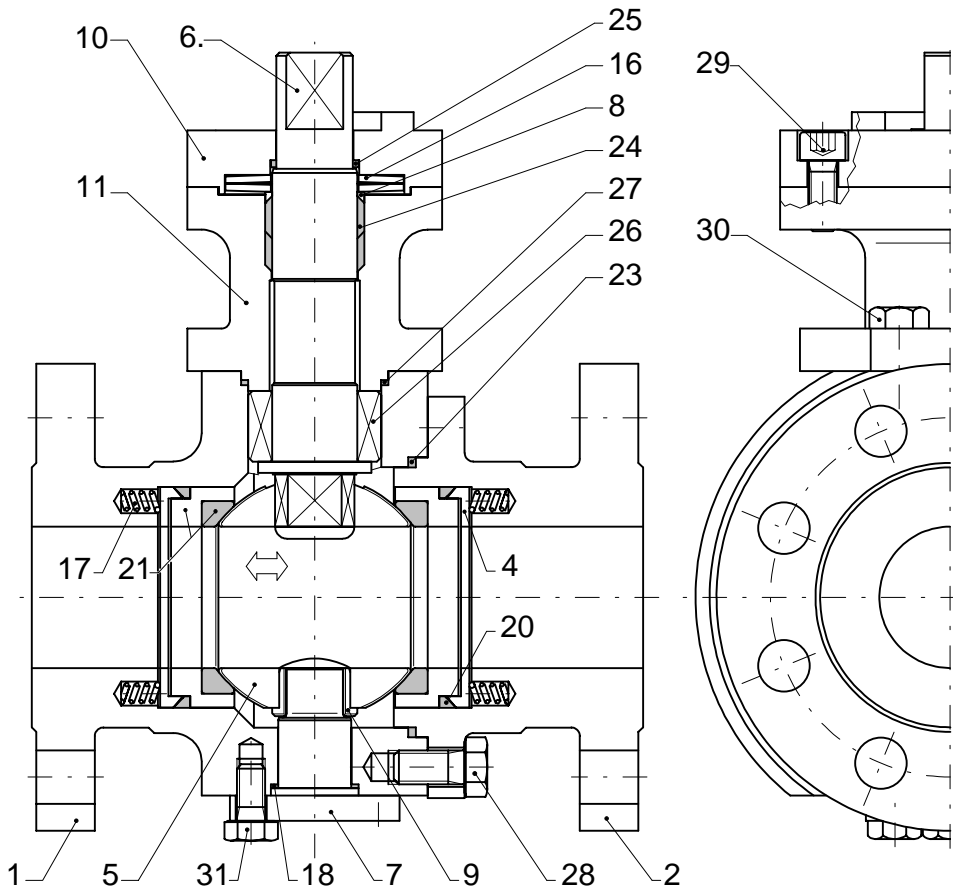


fig. 1  
ball valve, series 14-C

Technical modifications are reserved.

item	designation	temperatures:	
		-40°C to 350°C <sup>1)</sup>	-10°C to 350°C <sup>1)</sup>
1	body	1.4571 / 1.4408	1.0460 / 1.0619
2	body end connection		
4	retainer ring	1.4571	1.4571
5	ball	1.4571 / 1.4408 <sup>2)</sup>	1.4571 / 1.4408 <sup>2)</sup>
6	stem	1.4571	1.4571
7	lower trunnion	1.4571 coated	1.4571 coated
8	gland washer	1.4571	1.4571
9	bearing bush	1.4571 coated	1.4571 coated
10	bearing cover	1.4571	1.0460
11	extension		
16	plate spring	1.4568	1.8159
17	coil spring	1.4571	1.4571
18	body gasket	Graphite	Graphite
20	sealing ring		
21	seat-unit	1.4571 / Carbon-Antimon	1.4571 / Carbon-Antimon
23	body gasket	Graphite	Graphite
24	stem packing		
25	bearing ring	PTFE - 25% Glass	PTFE - 25% Glass
26	bearing	Carbon-Antimon	Carbon-Antimon
27	body gasket	Graphite	Graphite
28-31	screw	A 2-70	A 2-70

1) Materials for lower/higher temperatures on request.

2) Optionally coated.

## 2.0 Technical data Series 14-S, 14-M, 14-C

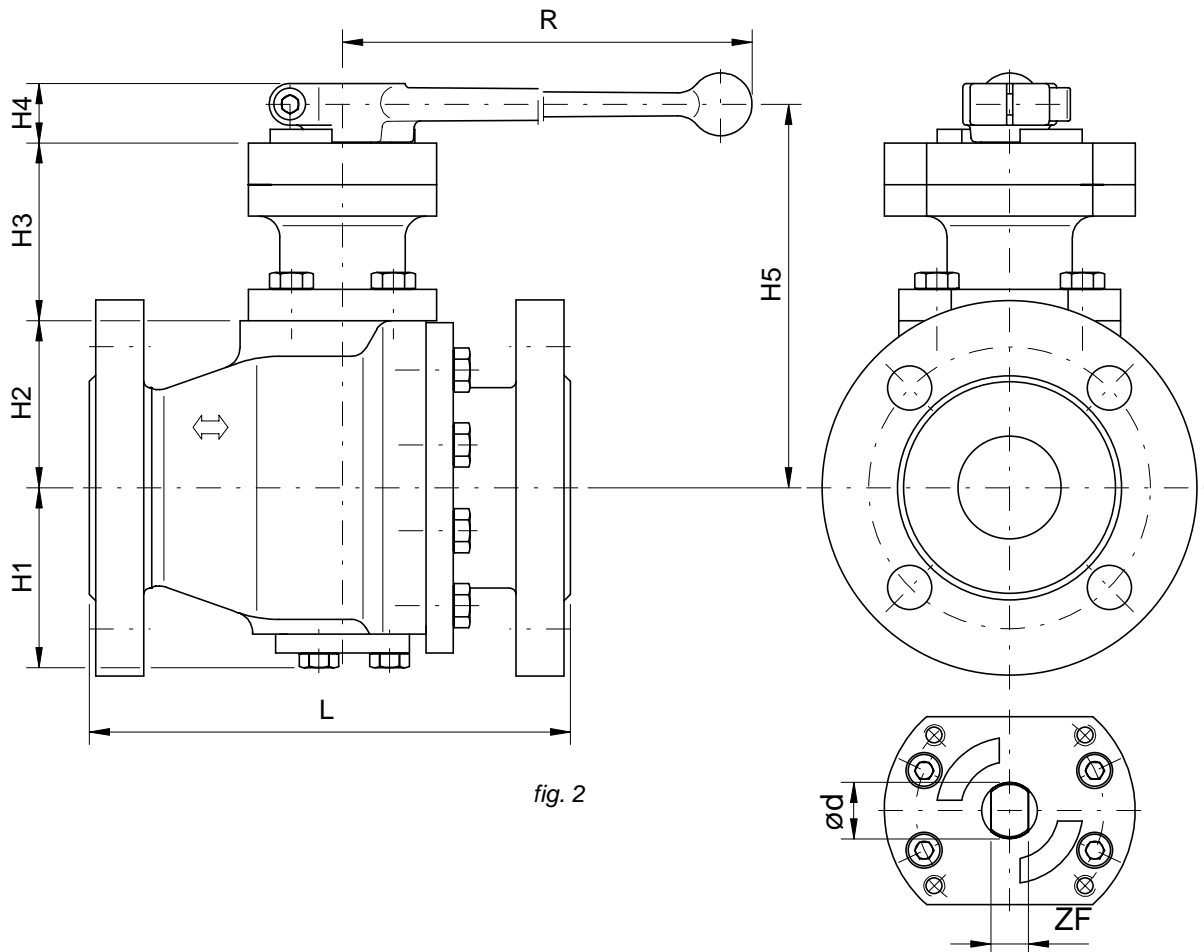
### 2.1 Nominal size / Dimensions / Connections / Flow / Weights

Nominal size (DN)		dimensions								flow $k_{v100}$ [m <sup>3</sup> /h] $\Delta p=1\text{bar}$	face to face			connections	weight [kg]			actuator-connection DIN/ISO 5211
											ANSI <sup>2)</sup>		DIN 558-1		ANSI <sup>2)</sup>	DIN 558-1		
		H1	H2	H3	H4	H5	R	$\phi d$	ZF		RF/FF	FTF1	FTF15		RF/FF	FTF1	FTF15	
1/2"	15	--	--	--	--	--	--	--	--	--	--	--	--	--	--	--	--	
3/4"	20	--	--	--	--	--	--	--	--	--	--	--	--	--	--	--	--	
1"	25	61	47	67	23	159	300	17	12	65	165	160	--	8	8	--	F 07	
1 1/4"	32	72	52	67	23	164	300	17	12	117	178	180	--	11	11	--	F 07	
1 1/2"	40	80	72	84	28	176	450	27	18	196	190	200	--	16	15	--	F 10	
2"	50	86	80	85	28	184	450	27	18	325	216	230	--	30	31	--	F 10	
2 1/2"	65	100	90	85	28	194	450	27	18	598	330	290	270	50	48	47	F 10	
3"	80	119	104	140	37	273	700	40	32	960	283	310	280	69	72	69	F 12	
4"	100	132	124	140	37	293	700	40	32	1650	305	350	300	84	89	84	F 12	
5"	125	138	132	140	37	301	700	40	32	2720	381	400	325	105	109	98	F 12	
6"	150	173	165	142	33	--	--	58	38	4200	403	480	350	140	148	135	F 14	
8"	200	225	216	150	41	--	--	68	44	8130	419	600	400	270	285	270	F 16	
10"	250	268	257	195	41	--	--	82	55	13500	457	730	450	360	375	360	F 16	

dimensions in mm

<sup>2)</sup> valid for ANSI Class 300 and Class 600

Technical modifications are reserved.



### 3.2 Special features

profit:

- ready to take actuator
- minimal abrasion
- standard connections
- constant torque
- minimal maintenance

design:

- two piece body
- trunnion mounted ball
- no welds
- anti blowout proof stem
- spring loaded seat system
- live loaded stem packing