

“Top-Entry“ Two-Way Ball Valves Series 17



17-S

DN: ½" to 20"
PN: ANSI Class 150/600
Temp.: -40°C to +250°C



17-M

DN: ½" to 20"
PN: ANSI Class 150/600
Temp.: -40°C to +450°C



17-K

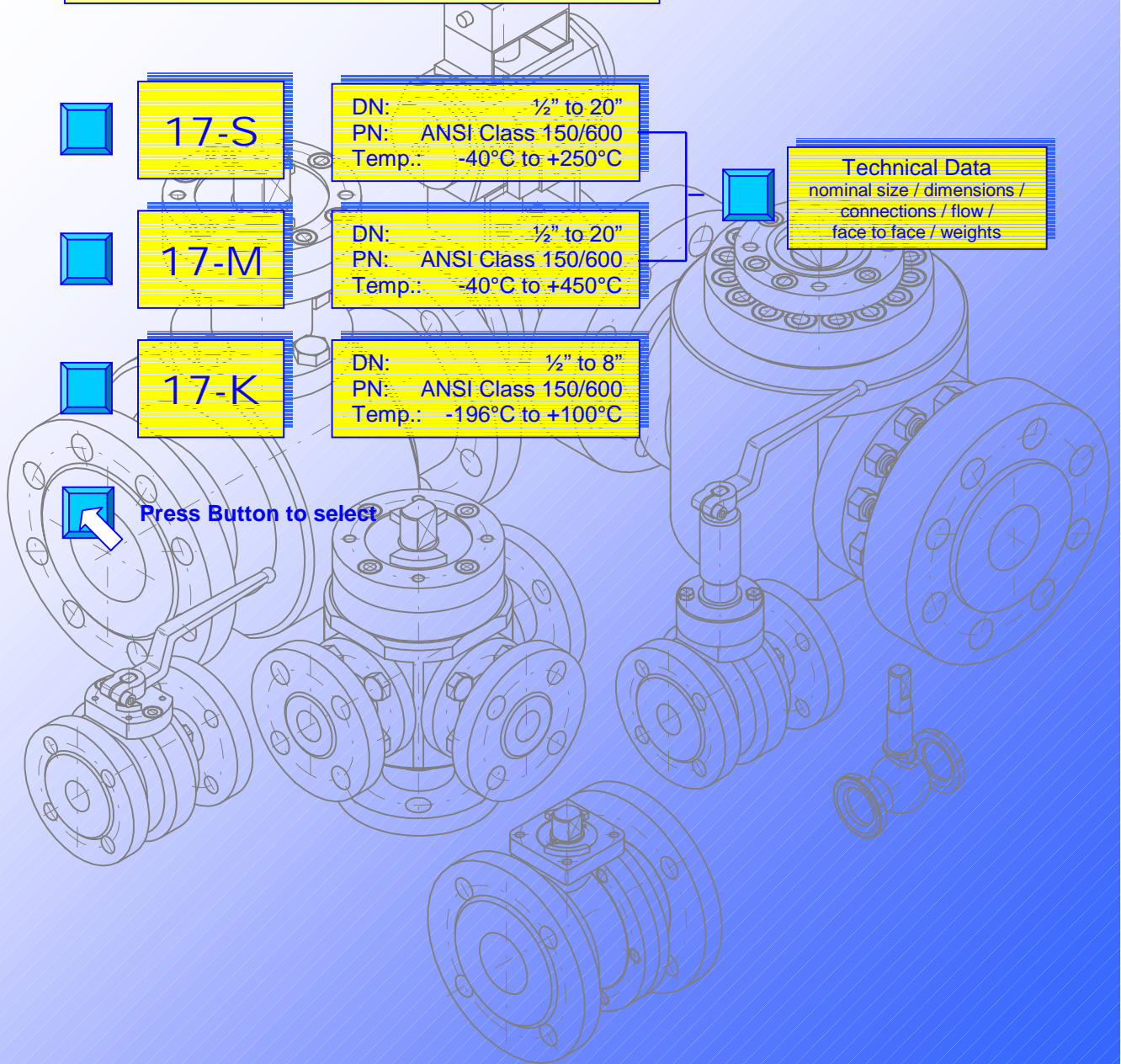
DN: ½" to 8"
PN: ANSI Class 150/600
Temp.: -196°C to +100°C



Technical Data
nominal size / dimensions /
connections / flow /
face to face / weights

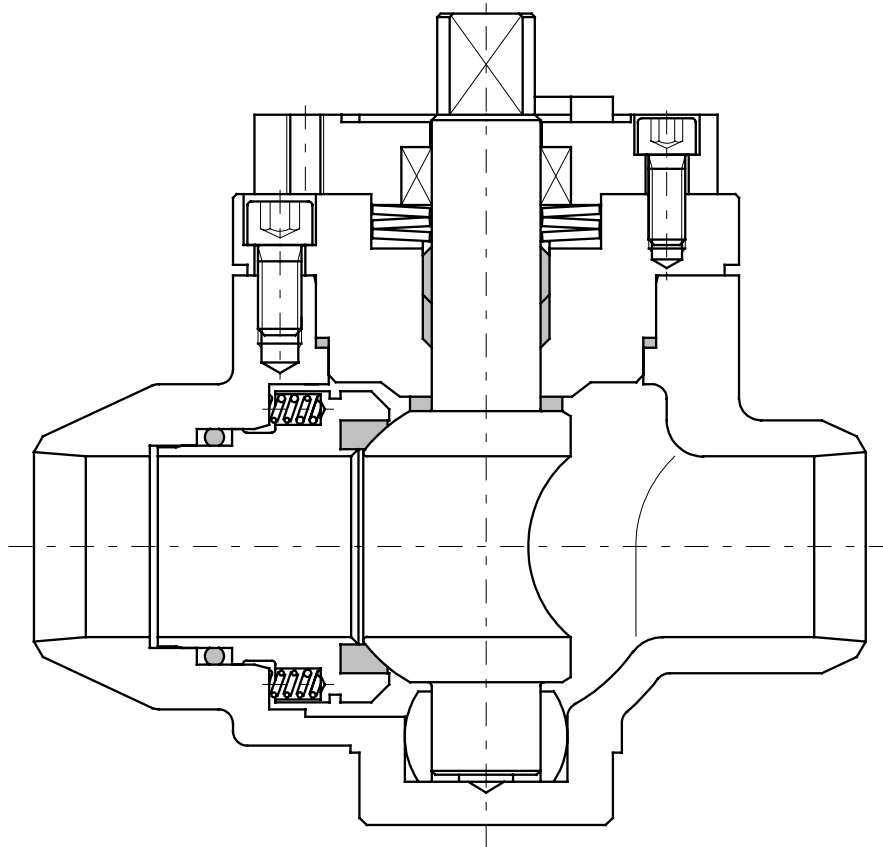


Press Button to select



„Top-Entry“
Two-Way Ball Valve
Series 17-S

DN ½“ to 20“



Description:

This PERRIN ball valve design features a one-piece body, bolted cover and a trunnion mounted solid ball stem. The seat system and the stem packing are spring loaded, resulting in very good sealing properties and a constant torque not influenced by temperature fluctuations. The Top-Entry valve can be directly welded into the pipe without damage to the internals. Easy replacing and inspection of trim parts by removal of the bolted cover. Trapping of product and built up of pressure is not possible due to the single seat system.

The actuator mounting flange corresponds to the NAMUR recommendations with dimensions to DIN/ISO 5211.

Stem extensions, locking devices and actuators with accessories can be field mounted at any time.

The ball valve is extruded in antistatic- and, as desired, in "fire-safe" design. The stem packing has examined TA-Luft.

Range of application:

DN ½“ to 20“	PN ANSI Cl. 150/600	Temperature -40°C to 250°C
-----------------	------------------------	-------------------------------

1.0 Main parts

item	designation
1	body
3	retainer ring
5	ball
8	gland washer
10	bearing cover
12	cover
13	pendulum baring
14	distance disc
15	gland washer
16	plate spring
17	coil spring
20	o-ring
21	seat ring
24	stem packing
25	bearing
27	body gasket
29	screw
30	screw

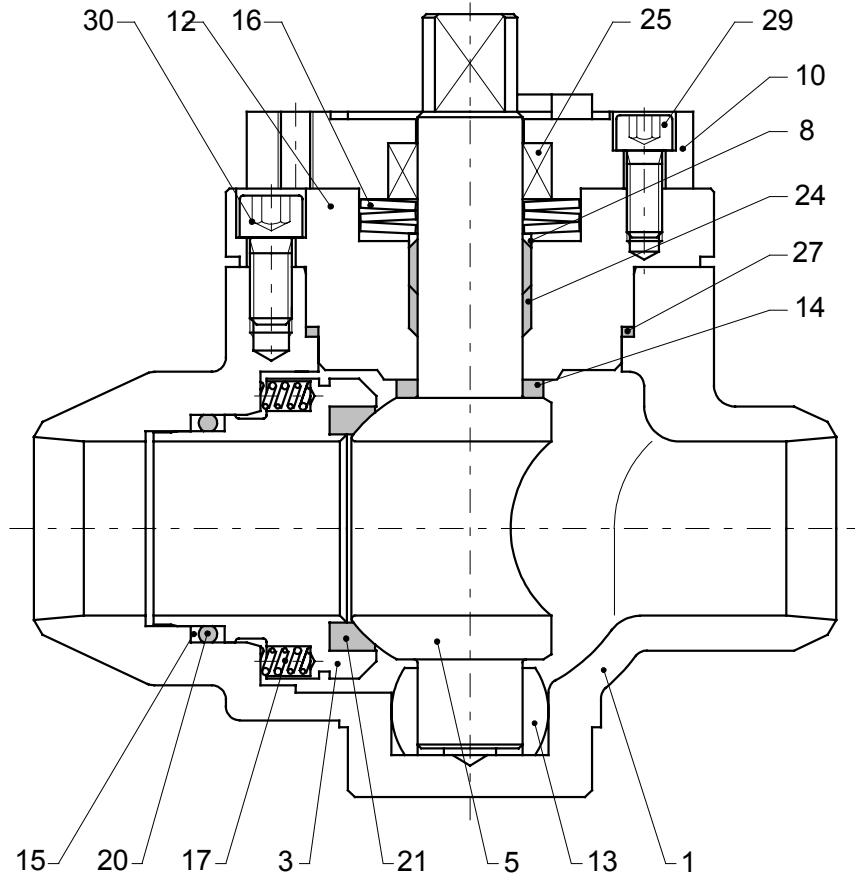


fig. 1
ball valve, series 17-S

Technical modifications are reserved.

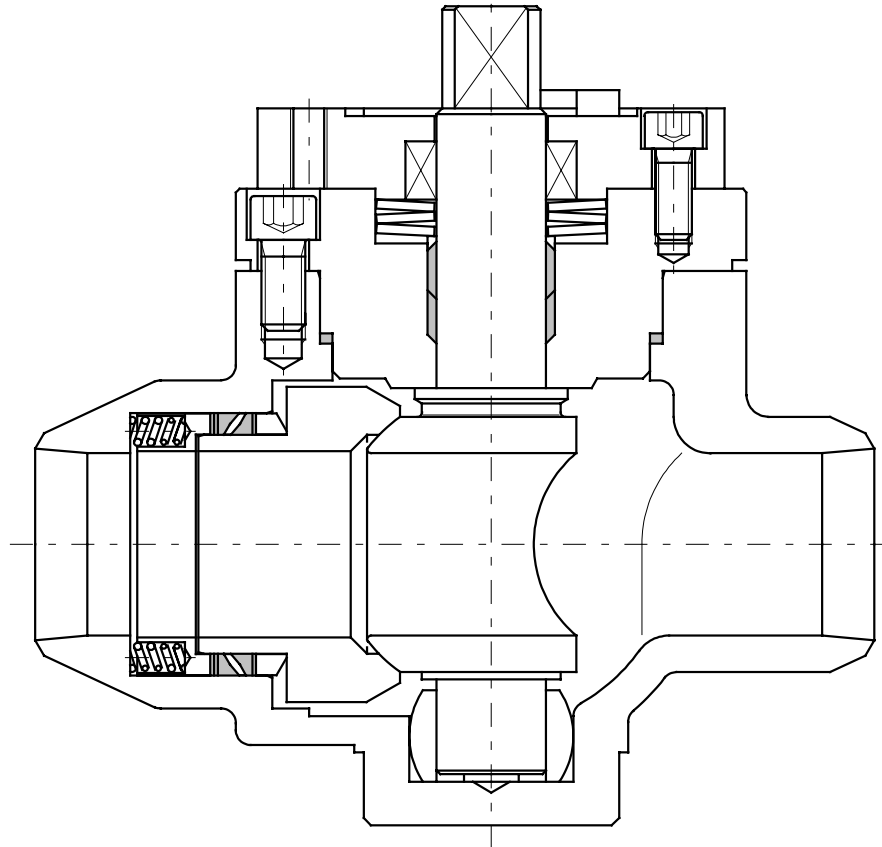
2.0 Materials

item	designation	temperatures:	
		-40°C to 250°C ¹⁾	-10°C to 250°C ¹⁾
1	body	1.4571 / 1.4408	1.0460 / 1.0619
3	retainer ring	1.4571	1.4571
5	ball	1.4571 / 1.4404 / 1.4408	1.4571 / 1.4404 / 1.4408
8	gland washer	1.4571	1.4571
10	bearing cover		1.0460
12	cover		
13	pendulum baring		1.4571
14	distance disc	PTFE - 25% Glass	PTFE - 25% Glass
15	gland washer	PTFE	PTFE
16	plate spring	1.4568	1.8159
17	coil spring	1.4571	1.4571
20	o-ring	Polymer / Elastomer	Polymer / Elastomer
21	seat ring	PTFE - TFM	PTFE - TFM
24	stem packing	PTFE - Graphite	PTFE - Graphite
25	bearing	Carbon	Carbon
27	body gasket	PTFE - TFM	PTFE - TFM
29-30	screw	A 2-70	A 2-70

1) Materials for lower/higher temperatures on request..

„Top-Entry“
Two-Way Ball Valve
Series 17-M

DN ½“ to 20“



Description:

This PERRIN ball valve design features a one-piece body, bolted cover and a trunnion mounted solid ball stem. The metallic seat system and the stem packing are spring loaded, resulting in very good sealing properties and a constant torque not influenced by temperature fluctuations. The Top-Entry valve can be directly welded into the pipe without damage to the internals. Easy replacing and inspection of trim parts by removal of the bolted cover. Trapping of product and built up of pressure is not possible due to the single seat system.

The actuator mounting flange corresponds to the NAMUR recommendations with dimensions to DIN/ISO 5211.

Stem extensions, locking devices and actuators with accessories can be field mounted at any time.

The ball valve is extruded in antistatic- and „fir-safe“ design. The stem packing has examined TA-Luft.

Range of application:

DN ½“ to 20“	PN ANSi Cl. 150/600	Temperature -40°C to 450°C
-----------------	------------------------	-------------------------------

1.0 Main parts

item	designation
1	body
3	retainer ring
4	retainer ring
5	ball
8	gland washer
10	bearing cover
12	cover
13	pendulum baring
16	plate spring
17	coil spring
20	seat packing
21	seat ring
24	stem packing
25	bearing
27	body gasket
29	screw
30	screw

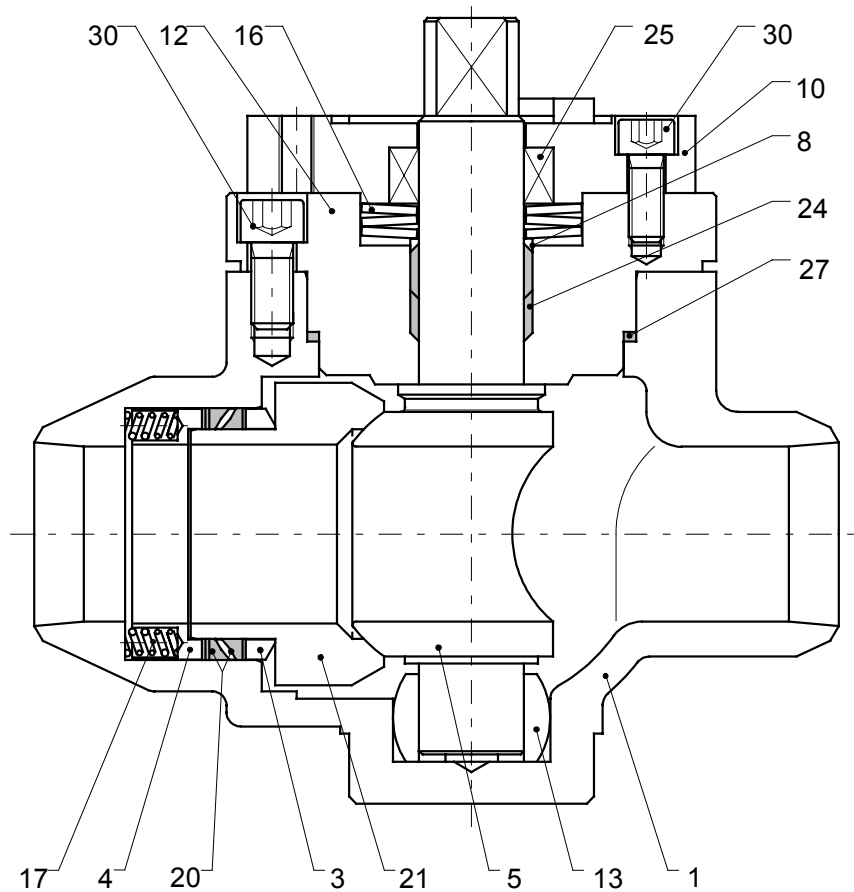


fig. 1
ball valve, series 17-M

2.0 Materials

item	designation	temperatures:	
		-40°C to 450°C ¹⁾	-10°C to 450°C ¹⁾
1	body	1.4571 / 1.4408	1.0460 / 1.0619
3	retainer ring	1.4571	1.4571
4	retainer ring		
5	ball	1.4571 / 1.4408 coated	1.4571 / 1.4408 coated
8	gland washer	1.4571	1.4571
10	bearing cover		1.0460
12	cover		1.4571
13	pendulum baring		1.4571
16	plate spring	1.4568	1.8159
17	coil spring	1.4571	1.4571
20	seat packing	1.4571 - Graphite	1.4571 - Graphite
21	seat ring	1.4571 coated	1.4571 coated
24	stem packing	Graphite	Graphite
25	bearing	Carbon	Carbon
27	body gasket	Graphite	Graphite
29-30	screw	A 2-70	A 2-70

1) Materials for lower/higher temperatures on request..

3.0 Technical data Series 17-S; 17-M

3.1 Nominal size / Dimensions / Connections / Flow / Weights

Nominal size (DN)		dimensions								flow k_{v100} [m ³ /h] $\Delta p=$ 1bar	face to face ²⁾		connections	weight [kg]		actuator-connection DIN/ISO 5211
											DIN 558-1			weight [kg]		
		H1	H2	H3	H4	B	R	ϕd	ZF		FTF1	FTF2		FTF1	FTF2	
1/2"	15	52	78	23	124	100	300	17	12	17		210		7	F 07	
3/4"	20	52	78	23	124	100	300	17	12	30		230		7,5	F 07	
1"	25	52	78	23	124	100	300	17	12	52		230		7,5	F 07	
1 1/4"	32															
1 1/2"	40	10	102	28	120	130	450	27	18	155		200		12	F 10	
2"	50	77	120	28	120	150	450	27	18	250		230		16	F 10	
2 1/2"	65															
3"	80	100	152	37	190	190	800	40	32	660		310		38	F 12	
4"	100	120	167	37	205	220	800	40	32	990		350		50	F 12	
5"	125															
6"	150	170	191	33	--	300	--	57	38	2250		480		115	F 14	
8"	200	215	255	41	--	400	--	68	44	4200		600		225	F 16	
10"	250	250	286	41	--	500	--	68	44	6700		730		330	F 16	

dimensions in mm

²⁾ Valid for ANSI Class 150 and Class 300

Technical modifications are reserved.

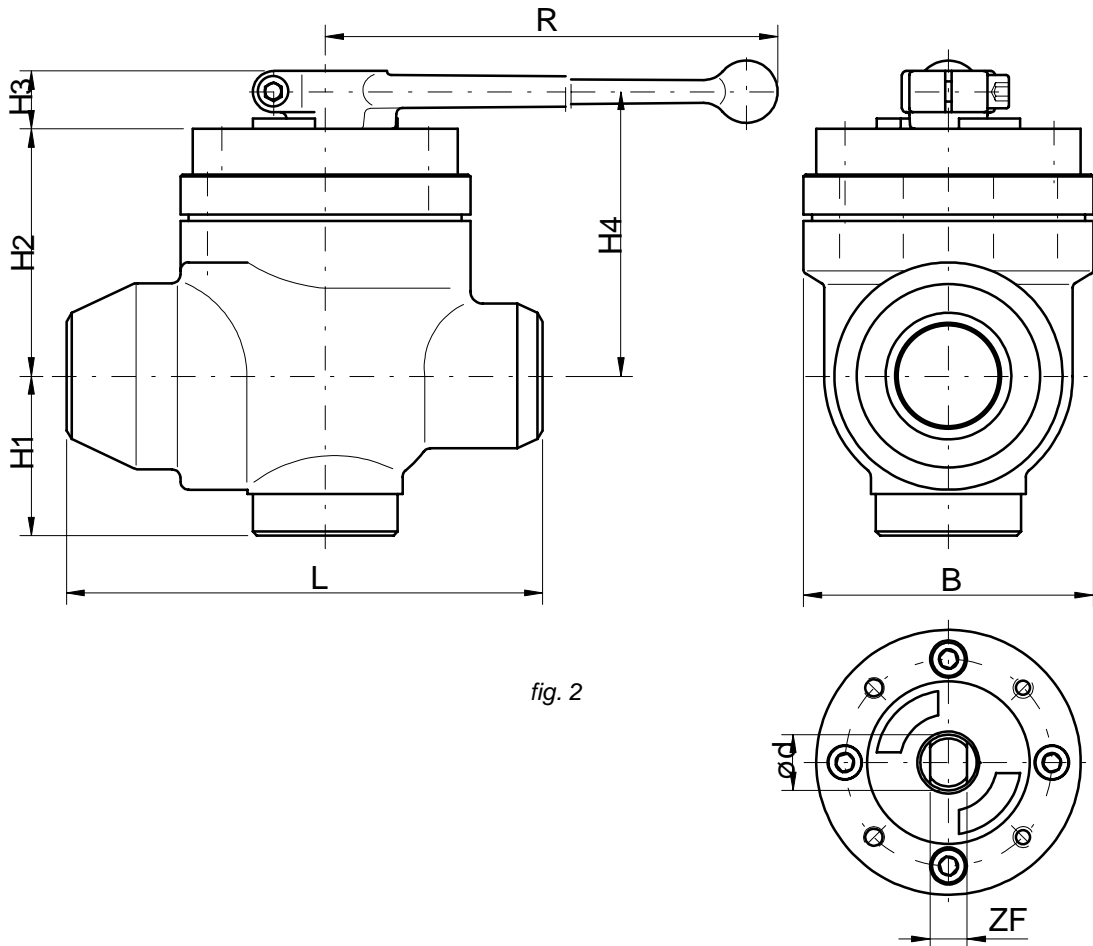


fig. 2

3.2 Special features

profit:

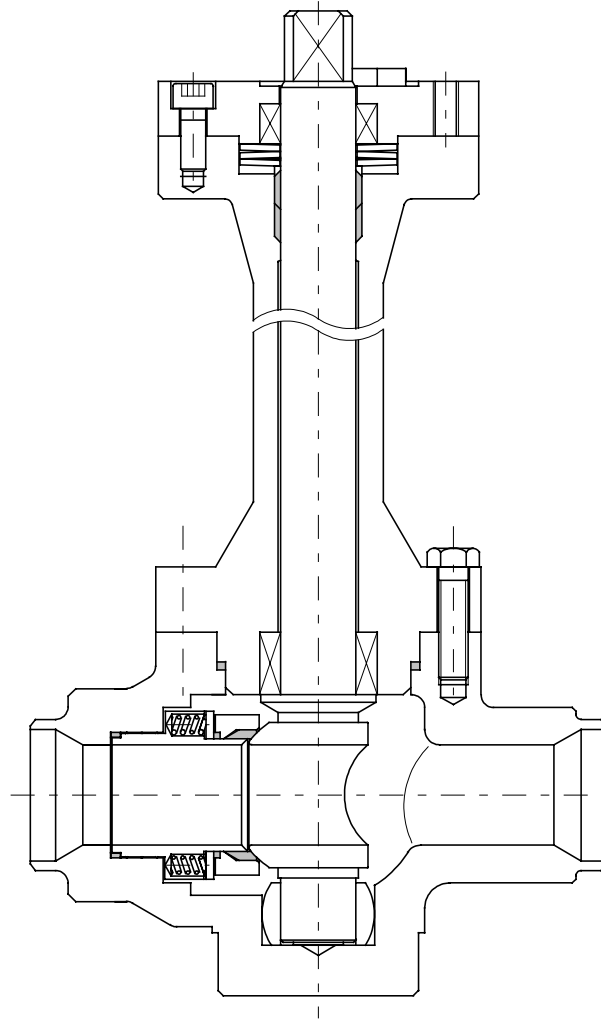
- no trapping of medium
- minimal abrasion
- standard connections
- constant torque
- minimal maintenance
- ready to take actuator

design:

- one piece body
- trunnion mounted ball with integral stem
- no welds
- spring loaded seat system
- live loaded stem packing

„Top-Entry“
Two-Way Ball Valve
Series 17-K

DN 1/2" to 8"



Description:

This PERRIN ball valve design features a one-piece body, bolted cover and a trunnion mounted solid ball stem. The metallic seat system and the stem packing are spring loaded, resulting in very good sealing properties and a constant torque not influenced by temperature fluctuations. The Top-Entry valve can be directly welded into the pipe without damage to the internals. Easy replacing and inspection of trim parts by removal of the bolted cover. Trapping of product and built up of pressure is not possible due to the single seat system.

The actuator mounting flange corresponds to the NAMUR recommendations with dimensions to DIN/ISO 5211.

Stem extensions, locking devices and actuators with accessories can be field mounted at any time.

The ball valve is extruded in antistatic- and „fir-safe“ design. The stem packing has examined TA-Luft.

Range of application:

DN 1/2" to 8"	PN ANSI Cl. 150/600	Temperature -196°C to 100°C
------------------	------------------------	--------------------------------

1.0 Main parts

item	designation
1	body
3	retainer ring
4	retainer ring
5	ball
8	gland washer
10	bearing cover
12	cover
13	pendulum baring
15	retainer disc
16	plate spring
17	coil spring
20	sealing ring
21	seat ring
24	stem packing
25	bearing
26	bearing
27	body gasket
29	screw
30	screw
35	sealing ring

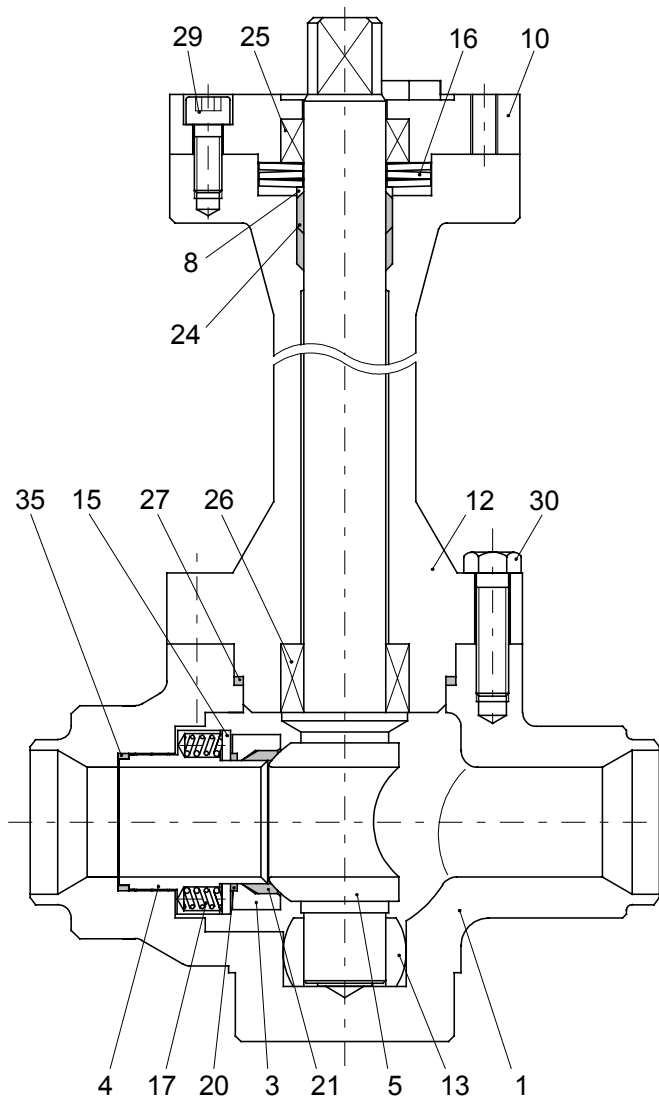


fig. 1
ball valve, series 17-K

2.0 Materials

item	designation	temperatures:		
		-196°C to 100°C		
1	body	1.4541 / 1.4552		
3	retainer ring	1.4571		
4	retainer ring			
5	ball	1.4541 / 1.4552		
8	gland washer	1.4571		
10	bearing cover			
12	cover	1.4541		
13	pendulum baring	1.4571		
15	retainer disc			
16	plate spring	1.4401		
17	coil spring	1.4571		
20	sealing ring	Graphite		
21	seat ring	PCTFE		
24	stem packing	PTFE-Graphite		
25	bearing	Carbon		
26	bearing	Carbon-Antimon		
27	body gasket	Graphite		
29-30	screw	A 2-70		
35	sealing ring	PCTFE		

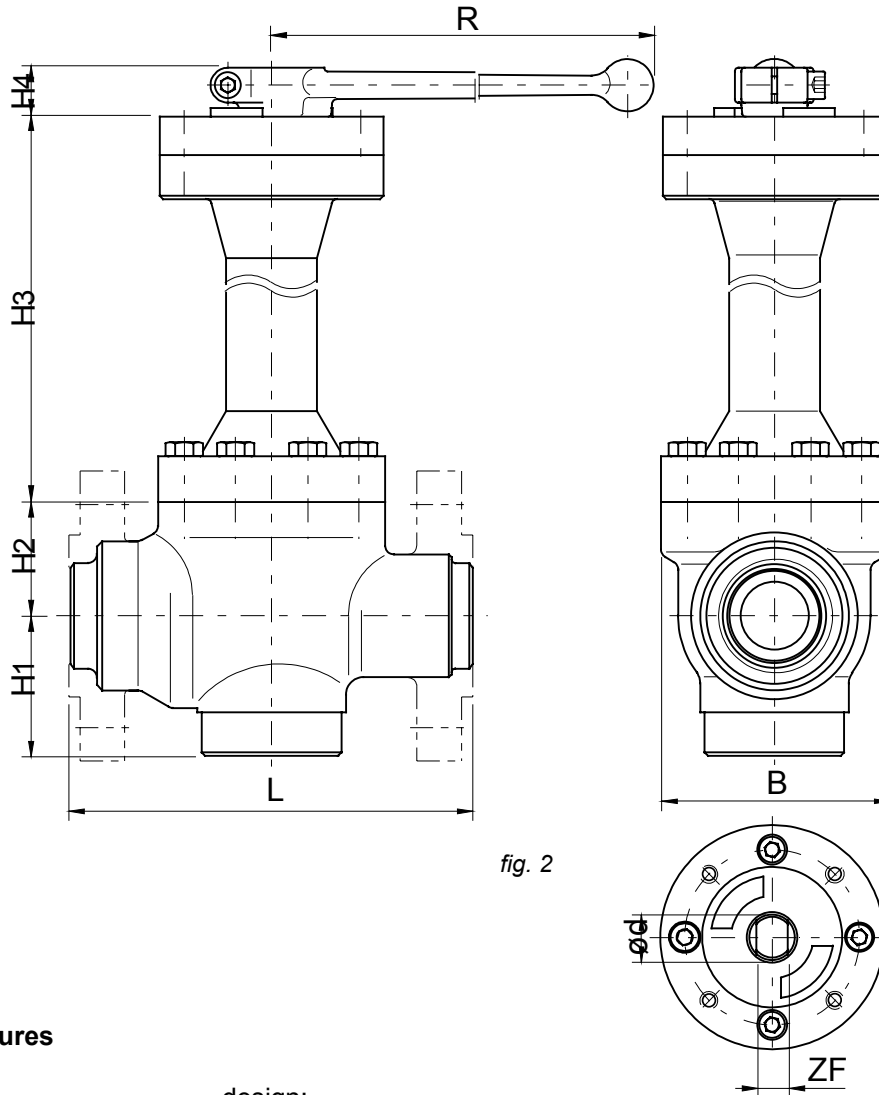
3.0 Technical data

3.1 Nominal size / Dimensions / Connections / Flow / Weights

Nominal size (DN)	dimensions									flow K_{V100} [m ³ /h]	face to face ²⁾		connections	weight [kg]		actuator-connection DIN/ISO 5211
	H1	H2	H3	H4	B	R	ød	ZF	DIN 558-1		FTF1	FTF2				
									L					L		
1/2"	15	65	55	292	23	100	300	17	12	17		210			11	F 07
3/4"	20	65	55	292	23	100	300	17	12	30		230			12,5	F 07
1"	25	65	55	292	23	100	300	17	12	52		230			13	F 07
1 1/4"	32															
1 1/2"	40	80	65	348	28	130	450	27	18	155		200			23	F 10
2"	50	85	75	348	28	150	450	27	18	250		230			25	F 10
2 1/2"	65	100	90	348	28	170	450	27	18	420		290			58	F 10
3"	80	120	107	406	37	190	800	40	32	660		310			62	F 12
4"	100	130	105	406	37	220	800	40	32	990		350			65	F 12
5"	125															
6"	150	165	140	398	33	300	--	57	38	2250		480			130	F 14
8"	200	215	185	408	41	400	--	68	44	4200		600			295	F 16

dimensions in mm

Technical modifications are reserved.



3.2 Special features

profit:

- no trapping of medium
- minimal abrasion
- standard connections
- constant torque
- minimal maintenance
- ready to take actuator

design:

- one piece body
- trunnion mounted ball with integral stem
- no welds
- spring loaded seat system
- live loaded stem packing
- extension for insulation