

## Diverter Ball Valves



<b>Series 25-S</b>	DN:	½" to 8"	body:	split
	PN:	ANSI Cl. 150	ball:	trunnion mounted
	Temp.:	-40°C to 250°C	seat:	spring loaded
			port:	L- bore >150°



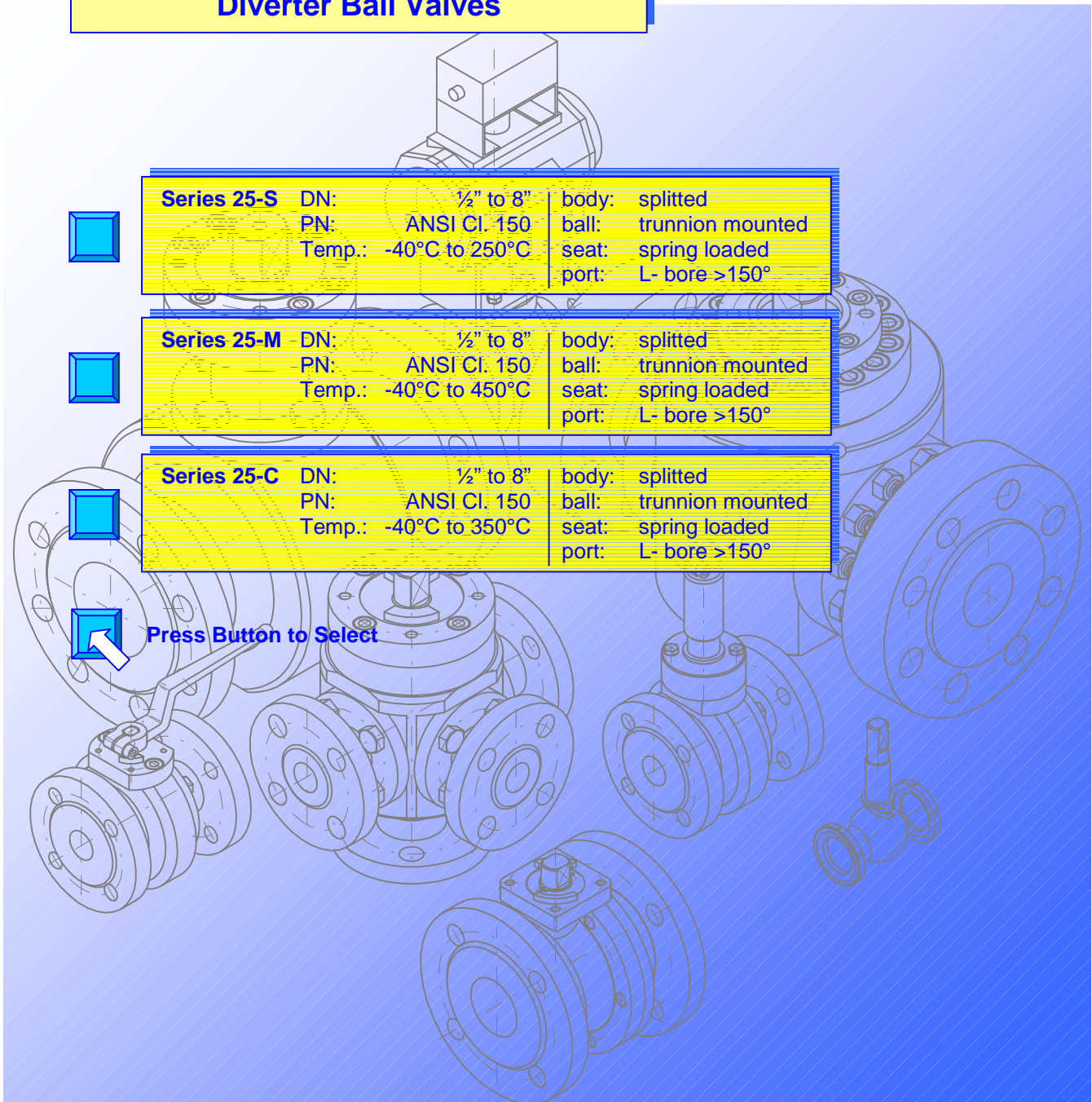
<b>Series 25-M</b>	DN:	½" to 8"	body:	split
	PN:	ANSI Cl. 150	ball:	trunnion mounted
	Temp.:	-40°C to 450°C	seat:	spring loaded
			port:	L- bore >150°



<b>Series 25-C</b>	DN:	½" to 8"	body:	split
	PN:	ANSI Cl. 150	ball:	trunnion mounted
	Temp.:	-40°C to 350°C	seat:	spring loaded
			port:	L- bore >150°

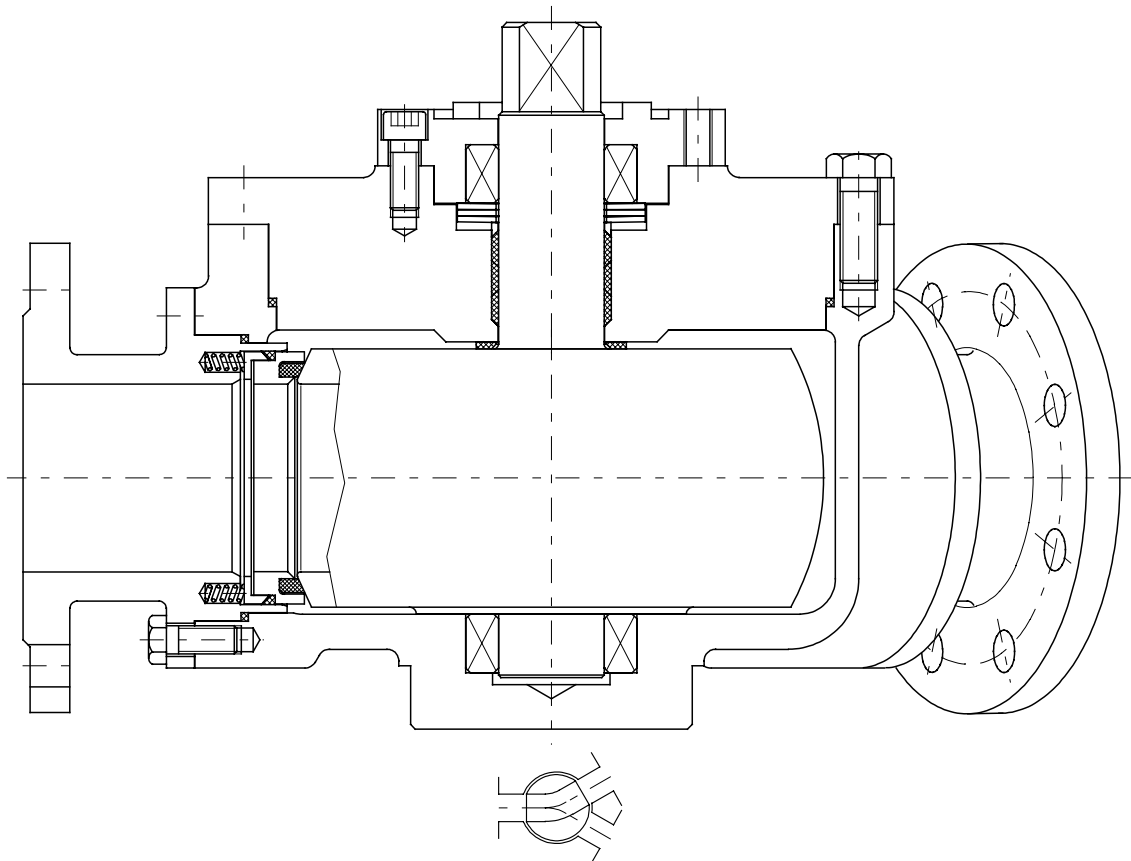


**Press Button to Select**



# Diverter Valve Series 25-S

DN 1/2" to 8"



## Description:

This PERRIN ball valve design features a splitt body and a trunnion mounted ball with integral stem. The seat system and the stem packing are spring loaded, resulting in very good sealing properties and a constant torque not influenced by temperature fluctuations.

The ball features an 30° port design.

The actuator mounting flange corresponds to the NAMUR recommendations with dimensions to DIN/ISO 5211.

Stem extensions, locking devices and actuators with accessoires can be field mounted at any time. The

The ball valve is extradited in antistatic-design and, as desired, in "fire-safe design". The stem packing has examined TA-Luft.

## Range of application:

DN 1/2" to 8"	PN ANSI Class 150	Temperature -40°C to 250°C
------------------	----------------------	-------------------------------

## 1.0 Main parts

item	designation
1	body
2	body end connection
3	retainer ring
4	retainer ring
5	ball
8	gland washer
10	bearing cover
12	cover
13	bearing
14	distance ring
16	plate spring
17	coil spring
20	sealing ring
21	seat ring
23	body gasket
24	stem packing
25	bearing
27	body gasket
28	screw
29	screw
30	screw

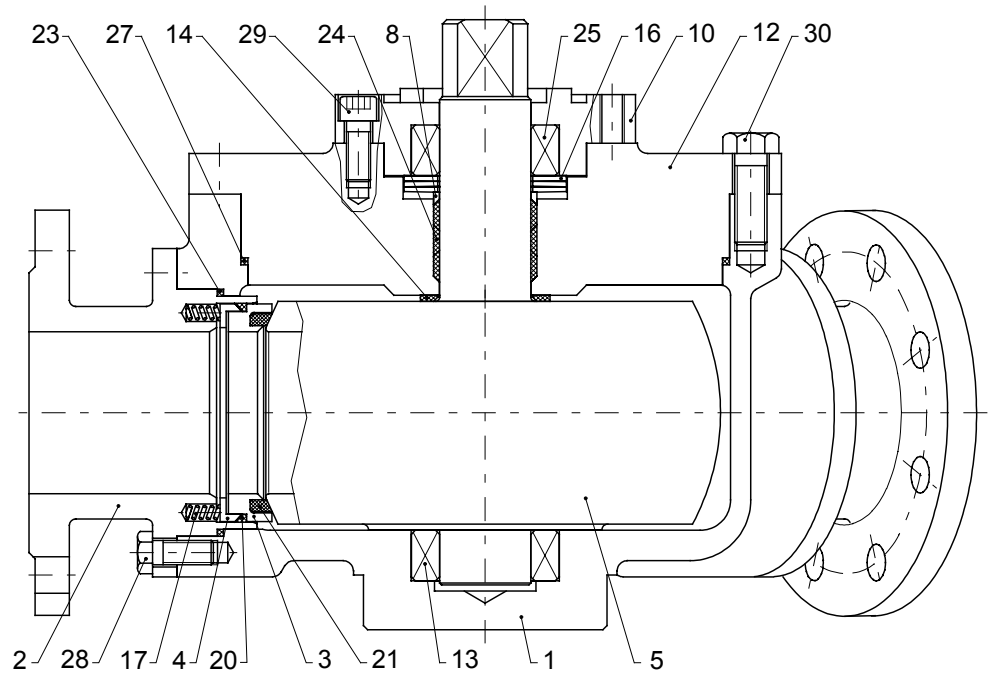


fig. 1  
ball valve, series 25-S

Technical modifications are reserved.

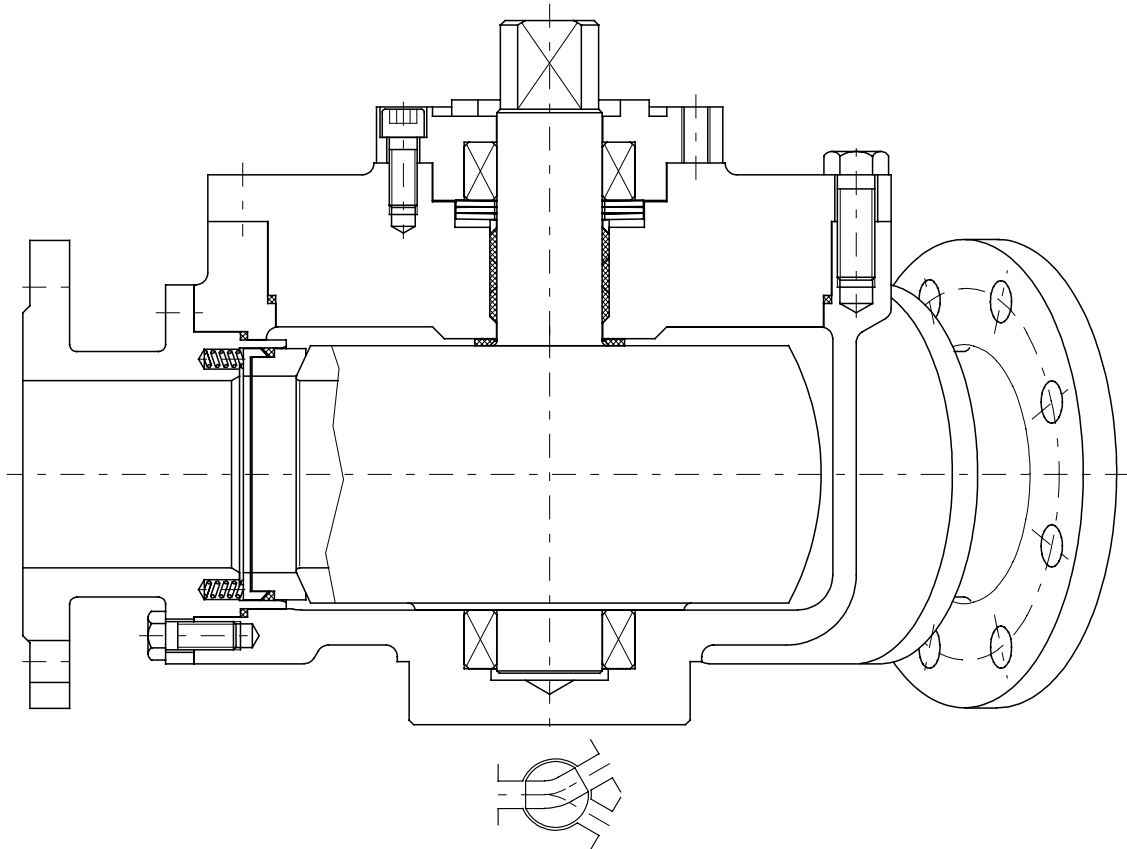
## 2.0 Materials

item	designation	temperatures:	
		-40°C to 250°C <sup>1)</sup>	-10°C to 250°C <sup>1)</sup>
1	body	1.4571 / 1.4408	1.0460 / 1.0619
2	body end connection		
3	retainer ring	1.4571	1.4571
4	retainer ring		
5	ball	1.4571 / 1.4408	1.4571 / 1.4408
8	gland washer	1.4571	1.4571
10	bearing cover		1.0460
12	cover	1.4571 / 1.4408	1.0460 / 1.0619
13	bearing	Carbon	Carbon
14	distance ring	PTFE - 25% Glass	PTFE - 25% Glass
16	plate spring	1.4568	1.8159
17	coil spring	1.4571	1.4571
20	sealing ring	PTFE - TFM	PTFE - TFM
21	seat ring		
23	body gasket		
24	stem packing	PTFE - Graphite	PTFE - Graphite
25	bearing	Carbon	Carbon
27	body gasket	PTFE - TFM	PTFE - TFM
28-30	screw	A 2-70	A 2-70

1) Materials for lower/higher temperatures on request..

# Diverter Valve Series 25-M

DN 1/2" to 8"



## Description:

This PERRIN ball valve design features a split body and a trunnion mounted ball with integral stem. The metallic seat system and the stem packing are spring loaded, resulting in very good sealing properties and a constant torque not influenced by temperature fluctuations.

The ball features an 30° port design.

The actuator mounting flange corresponds to the NAMUR recommendations with dimensions to DIN/ISO 5211.

Stem extensions, locking devices and actuators with accessoires can be field mounted at any time.

The ball valve is extruded in antistatic- and „fire-safe“ design. The stem packing has examined TA-Luft.

## Range of application:

DN 1/2" to 8"	PN ANSI Class 150	Temperature -40°C to 450°C
------------------	----------------------	-------------------------------

## 1.0 Main parts

item	designation
1	body
2	body end connection
4	retainer ring
5	ball
8	gland washer
10	bearing cover
12	cover
13	bearing
14	distance ring
16	plate spring
17	coil spring
20	sealing ring
21	seat ring
23	body gasket
24	stem packing
25	bearing
27	body gasket
28	screw
29	screw
30	screw

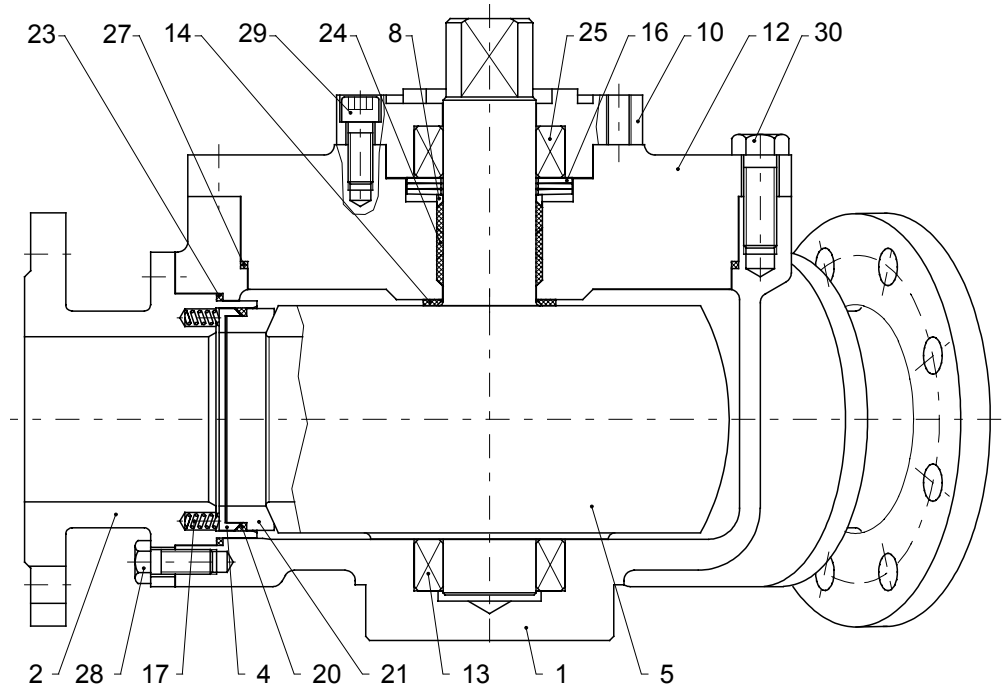


fig. 1  
ball valve, series 25-M

Technical modifications are reserved.

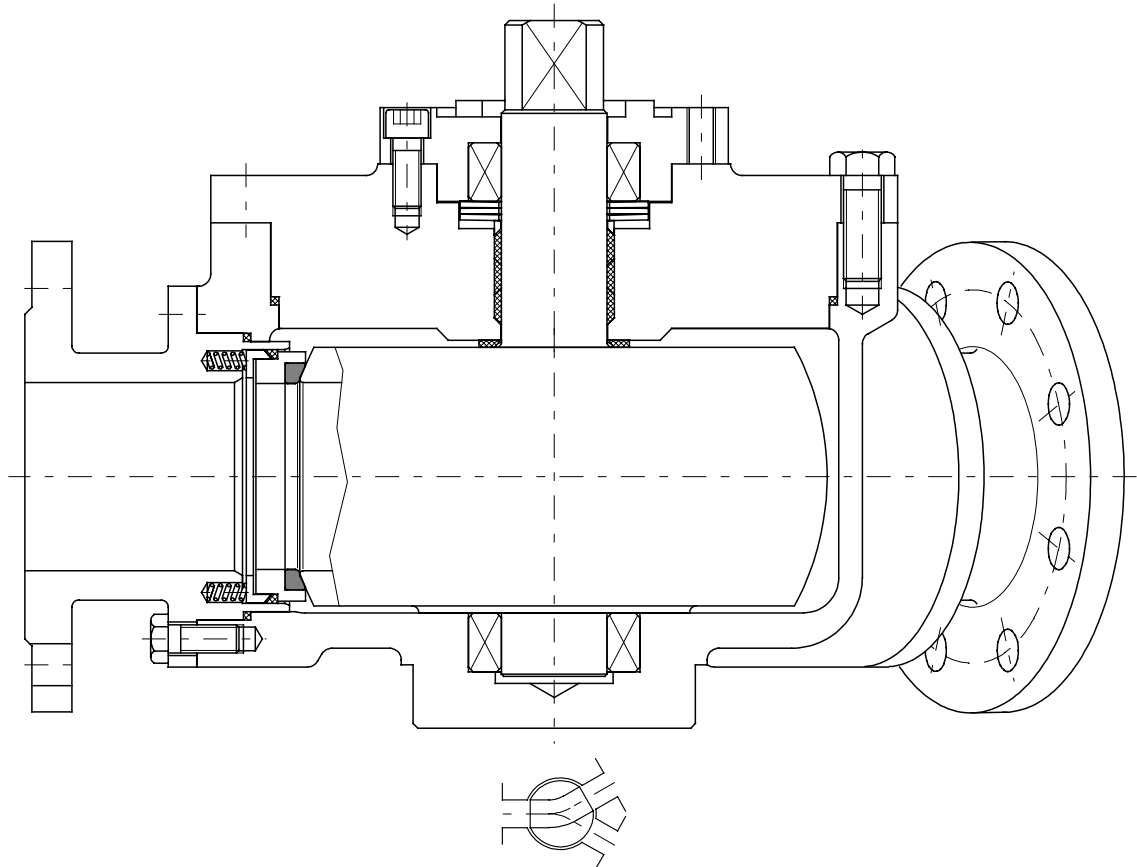
## 2.0 Materials

item	designation	temperatures:	
		-40°C to 450°C <sup>1)</sup>	-10°C to 450°C <sup>1)</sup>
1	body	1.4571 / 1.4408	1.0460 / 1.0619
2	body end connection		
4	retainer ring	1.4571	1.4571
5	ball	1.4571 / 1.4408 coated	1.4571 / 1.4408 coated
8	gland washer	1.4571	1.4571
10	bearing cover		1.0460
12	cover	1.4571 / 1.4408	1.0460 / 1.0619
13	bearing	Carbon	Carbon
14	distance ring	1.4571	1.4571
16	plate spring	1.4568	1.8159
17	coil spring	1.4571	1.4571
20	sealing ring	Graphite	Graphite
21	seat ring	1.4571 coated	1.4571 coated
23	body gasket	Graphite	Graphite
24	stem packing		
25	bearing	Carbon	Carbon
27	body gasket	Graphite	Graphite
28-30	screw	A 2-70	A 2-70

1) Materials for lower/higher temperatures on request..

# Diverter Valve Series 25-C

DN 1/2" to 8"



## Description:

This PERRIN ball valve design features a split body and a trunnion mounted ball with integral stem. The carbon seat system and the stem packing are spring loaded, resulting in very good sealing properties and a constant torque not influenced by temperature fluctuations.

The ball features an 30° port design.

The actuator mounting flange corresponds to the NAMUR recommendations with dimensions to DIN/ISO 5211.

Stem extensions, locking devices and actuators with accessoires can be field mounted at any time.

The ball valve is extradited in antistatic- and „fire-safe“ design. The stem packing has examined TA-Luft.

## Range of application:

DN 1/2" to 8"	PN ANSI Class 150	Temperature -40°C to 350°C
------------------	----------------------	-------------------------------

## 1.0 Main parts

item	designation
1	body
2	body end connection
4	retainer ring
5	ball
8	gland washer
10	bearing cover
12	cover
13	bearing
14	distance ring
16	plate spring
17	coil spring
20	sealing ring
21	seat-unit
23	body gasket
24	stem packing
25	bearing
27	body gasket
28	screw
29	screw
30	screw

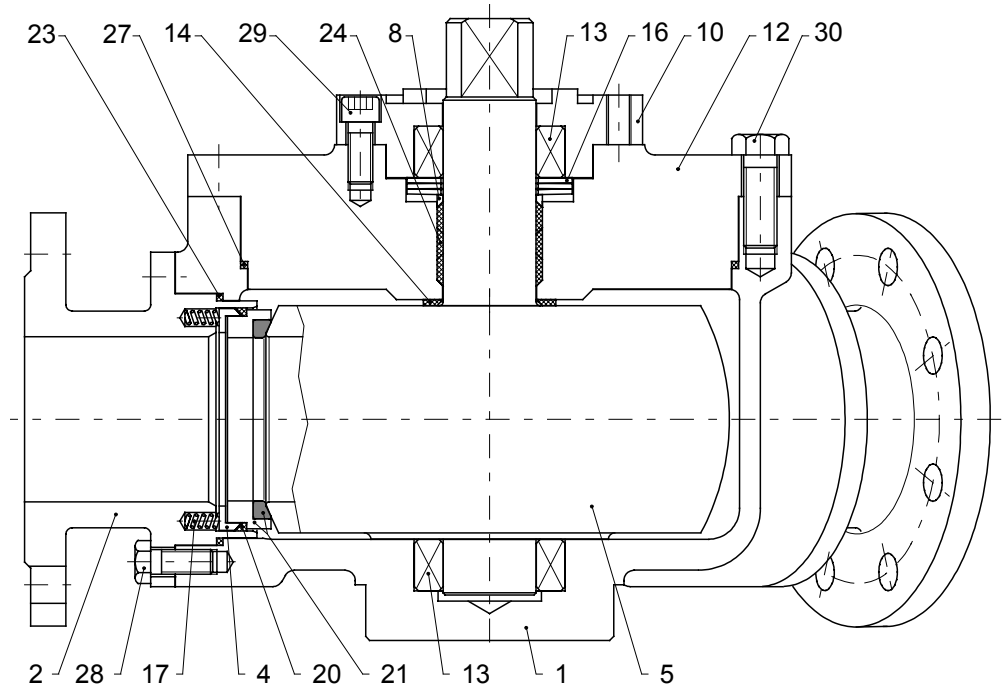


fig. 1  
ball valve, series 25-C

Technical modifications are reserved.

## 2.0 Materials

item	designation	temperatures:	
		-40°C to 350°C <sup>1)</sup>	-10°C to 350°C <sup>1)</sup>
1	body	1.4571 / 1.4408	1.0460 / 1.0619
2	body end connection		
4	retainer ring	1.4571	1.4571
5	ball	1.4571 / 1.4408	1.4571 / 1.4408
8	gland washer	1.4571	1.4571
10	bearing cover		1.0460
12	cover	1.4571 / 1.4408	1.0460 / 1.0619
13	bearing	Carbon	Carbon
14	distance ring	1.4571	1.4571
16	plate spring	1.4568	1.8159
17	coil spring	1.4571	1.4571
20	sealing ring	Graphite	Graphite
21	seat-unit	1.4571 - Carbon-Antimon	1.4571 - Carbon-Antimon
23	body gasket	Graphite	Graphite
24	stem packing		
25	bearing	Carbon	Carbon
27	body gasket	Graphite	Graphite
28-30	screw	A 2-70	A 2-70

1) Materials for lower/higher temperatures on request..

## Technical data, Series 25-S; 25-M; 25-C

### 3.0 Technical data

#### 3.1 Nominal size / Dimensions / Connections / Flow / Weights

Nominal size (DN)		dimensions							flow $k_{V100}$ [m <sup>3</sup> /h] $\Delta p=1\text{bar}$	face to face		connections	weight [kg]		actuator-connection DIN/ISO 5211	
		H1	H2	H3	H4	R	$\varnothing d$	ZF			Perrin Standard <sup>2)</sup>		L			
1/2"	15											flanges to DIN 2501 or ANSI B 16.5 (other connections on request)				
3/4"	20	55	92	28	148	450	27	18		38			160			F 10
1"	25	55	92	28	148	450	27	18		64			160			F 10
1 1/4"	32															
1 1/2"	40															
2"	50	95	125	37	158	800	40	32		258			200			F 12
2 1/2"	65															
3"	80	107	157	37	190	800	40	32		660			225			F 12
4"	100	116	168	37	201	800	40	32		1030			260			F 12
5"	125	140	177	33	--	--	57	38					290			F 14
6"	150	180	240	160	--	--	80	--		2320			310			F 16
8"	200	245	265	160	--	--	80	--		4125			500			F 16

dimensions in mm

<sup>2)</sup> shortest face to face dim.

Technical modifications are reserved.

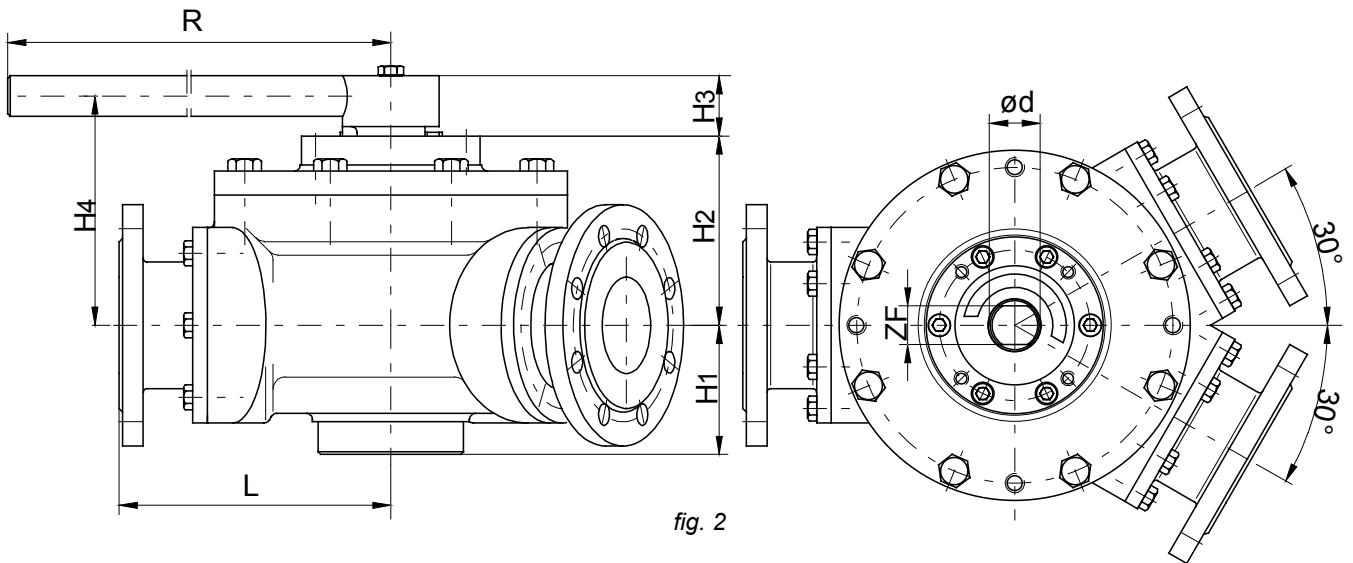


fig. 2

### 3.2 Special features

profit:

- ready to take actuator
- minimal abrasion
- standard connections
- constant torque
- minimal maintenance

design:

- splitt body
- trunnion mounted ball with integral stem
- no welds
- spring loaded seat system
- live loaded stem packing