

Two-Way Ball Valves Series 70



70-S

DN: ½" to 6"
PN: ANSI Class 150/300
Temp.: -40°C to 200°C



70-M

DN: ½" to 4"
PN: ANSI Class 150/300
Temp.: -10°C to 350°C



70-C

DN: ½" to 4"
PN: ANSI Class 150/300
Temp.: -10°C to 350°C



70-K

DN: ½" to 4"
PN: ANSI Class 150/300
Temp.: -160°C to 160°C



70-H

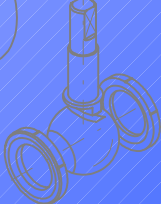
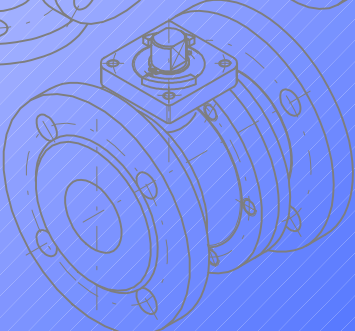
DN: ½" to 4"
PN: ANSI Class 150/900
Temp.: -40°C to 200°C



Technical Data
nominal size / dimensions /
connections / flow /
face to face / weights

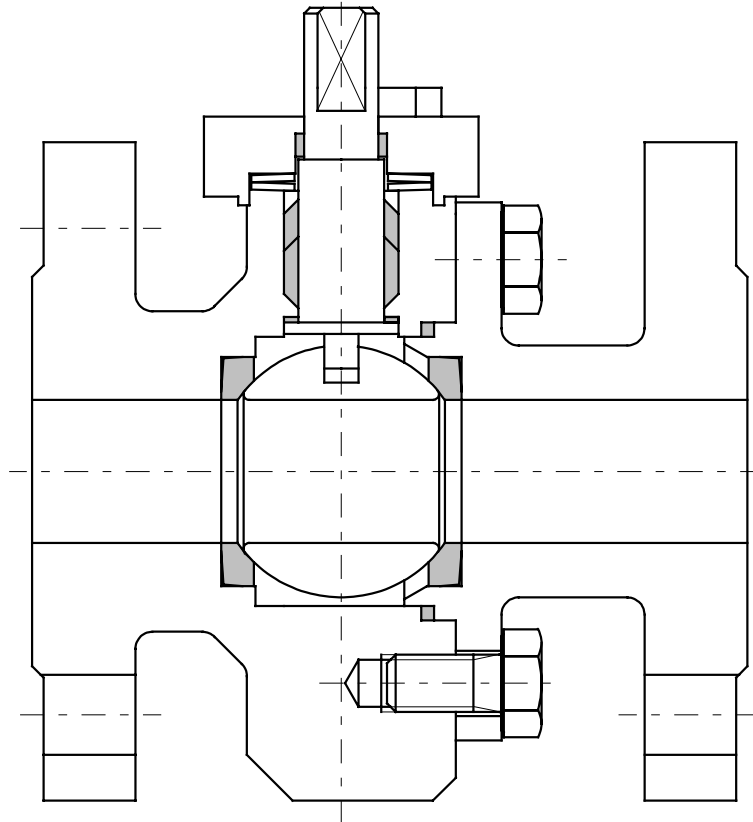


Press Button to select



Two-Way Ball Valve Series 70-S

DN 1/2" to 6"



Description:

This PERRIN ball valve design features a two piece body and a floating, seat supported ball. The stem packing is spring loaded the seat rings with pressure relief warranty are pre-loaded.

The actuator mounting flange corresponds to the NAMUR recommendations with dimensions to DIN/ISO 5211.

Stem extensions, locking devices and actuators with accessoires can be field mounted at any time.

The ball valve is extruded in antistatic-design, with anti blowout proof stem and, as desired, " fire-safe" tested. The stem packing has examined TA-Luft.

Range of application:

DN 1/2" to 6"	PN ANSI Cl. 150/300	Temperature -40°C to 200°C
------------------	------------------------	-------------------------------

1.0 Main parts

item	designation
1	body
2	body end connection
5	ball
6	stem
8	gland washer
10	bearing cover
16	plate spring
21	seat ring
23	body gasket
24	stem packing
25	bearing ring
26	bearing ring
28	screw
29	screw

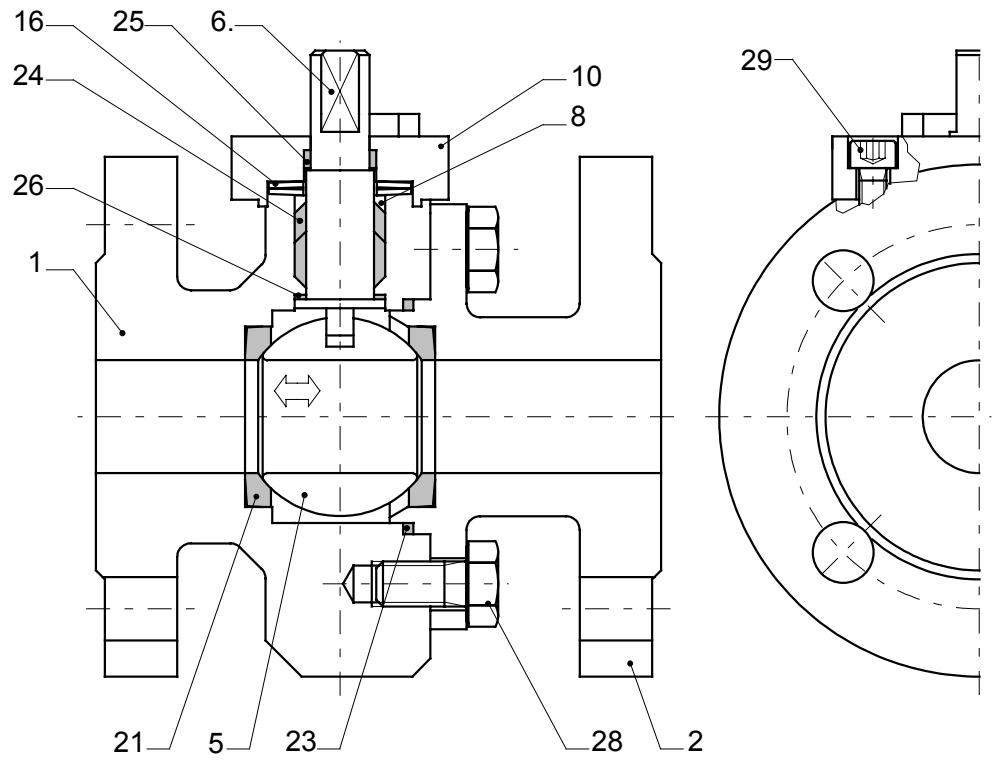


fig. 1
ball valve, series 70-S

Technical modifications are reserved.

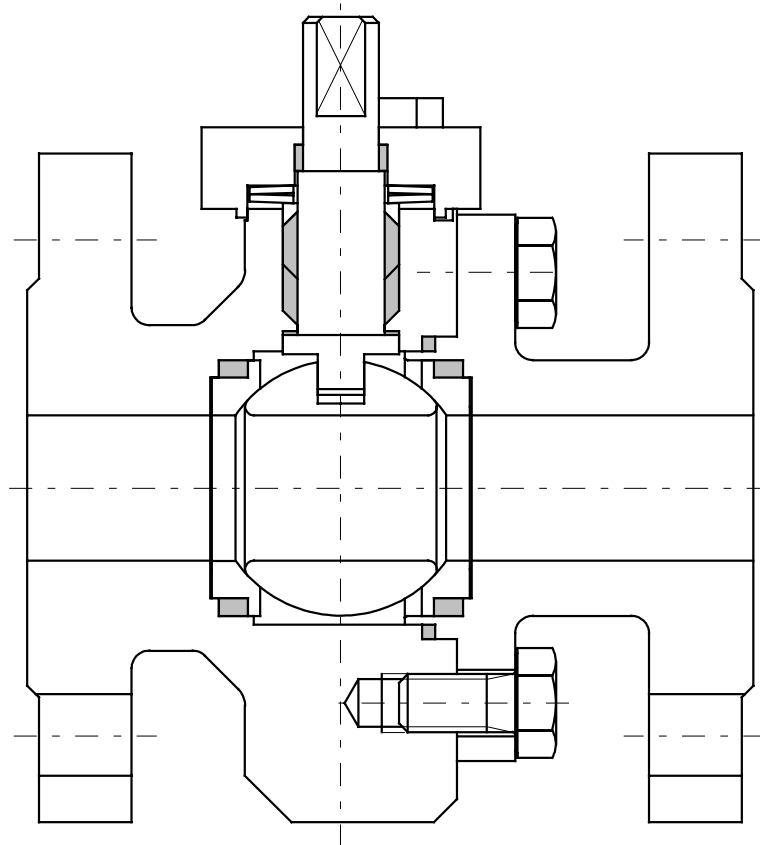
2.0 Materials

item	designation	temperatures:	
		-40°C to 200°C ¹⁾	-10°C to 200°C ¹⁾
1	body	1.4571 / 1.4408	1.0460 / 1.0619
2	body end connection		
5	ball	1.4571 / 1.4404 / 1.4408	1.4571 / 1.4404 / 1.4408
6	stem	1.4571	1.4571
8	gland washer		
10	bearing cover		
16	plate spring	1.4568	1.8159
21	seat ring	PTFE - TFM	PTFE - TFM
23	body gasket		
24	stem packing	PTFE - Graphite	PTFE - Graphite
25-26	bearing ring	PTFE - 25% Glass	PTFE - 25% Glass
28-29	screw	A 2-70	A 2-70

1) Materials for lower/higher temperatures on request..

Two-Way Ball Valve Series 70-M

DN 1/2" to 4"



Description:

This PERRIN ball valve design features a two piece body and a floating, seat supported ball. The stem packing is spring loaded, the metal seat rings are pre-loaded.

The actuator mounting flange corresponds to the NAMUR recommendations with dimensions to DIN/ISO 5211.

Stem extensions, locking devices and actuators with accessoires can be field mounted at any time.

The ball valve is extradited in antistatic-design, with anti blowout proof stem and in " fire-safe design". The stem packing has examined TA-Luft.

Range of application:

DN 1/2" to 4"	PN ANSI Cl. 150/300	Temperature -10°C to 350°C
------------------	------------------------	-------------------------------

1.0 Main parts

item	designation
1	body
2	body end connection
5	ball
6	stem
8	gland washer
10	bearing cover
16	plate spring
20	sealing ring
21	seat ring
23	body gasket
24	stem packing
25	bearing ring
26	bearing ring
28	screw
29	screw

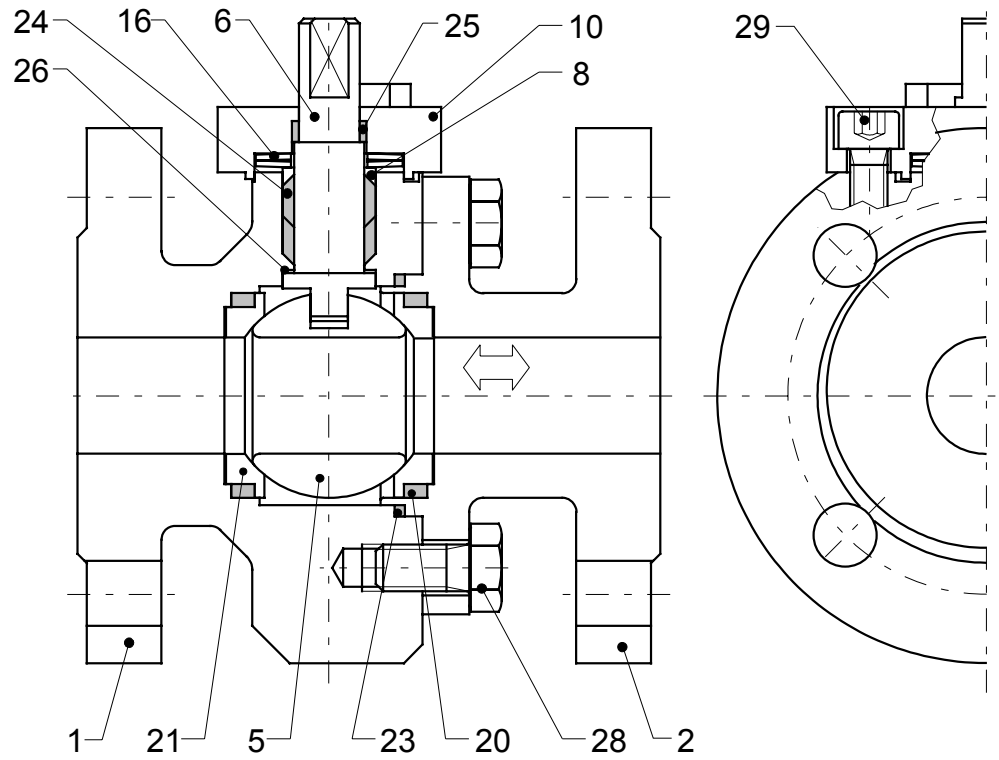


fig. 1
ball valve, series 70-M

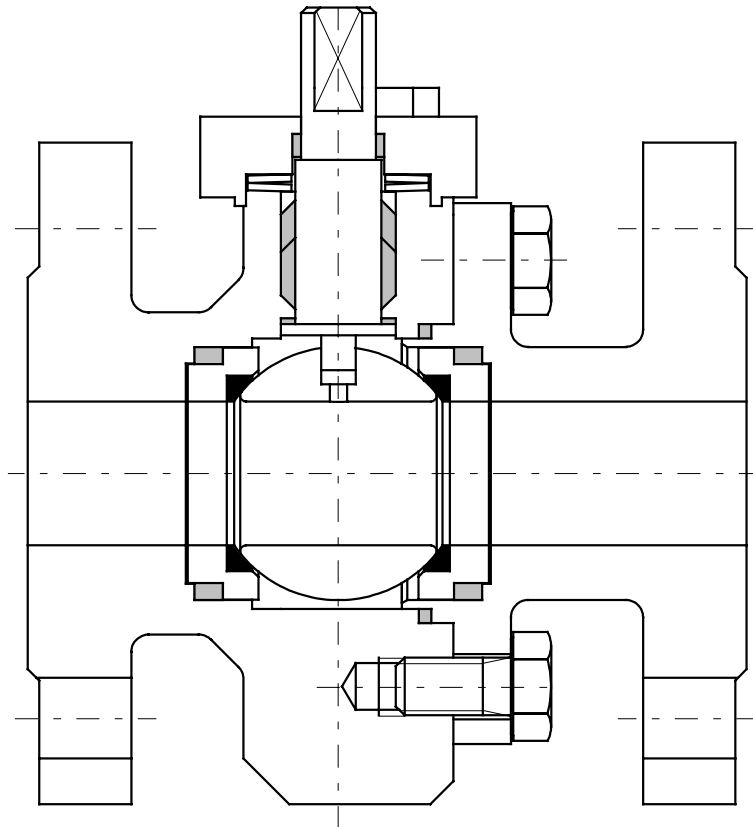
2.0 Materials

item	designation	temperatures:	
		-10°C to 350°C ¹⁾	-10°C to 350°C ¹⁾
1	body	1.4571 / 1.4408	1.0460 / 1.0619
2	body end connection		
5	ball	1.4571 / 1.4408 coated	1.4571 / 1.4408 coated
6	stem	1.4571	1.4571
8	gland washer		
10	bearing cover		
16	plate spring	1.4568	1.8159
20	sealing ring	Graphite	Graphite
21	seat ring	1.4571 coated / 3.1707	1.4571 coated / 3.1707
23	body gasket	Graphite	Graphite
24	stem packing		
25	bearing ring	1.0037.07	1.0037.07
26	bearing ring	Graphite with SS	Graphite with SS
28-29	screw	A 2-70	A 2-70

1) Materials for lower/higher temperatures on request..

Two-Way Ball Valve Series 70-C

DN 1/2" to 4"



Description:

This PERRIN ball valve design features a two piece body and a floating, seat supported ball. The stem packing is spring loaded, the seat units are pre-loaded.

The actuator mounting flange corresponds to the NAMUR recommendations with dimensions to DIN/ISO 5211.

Stem extensions, locking devices and actuators with accessoires can be field mounted at any time.

The ball valve is extradited in antistatic-design, with anti blowout proof stem and in " fire-safe design". The stem packing has examined TA-Luft.

Range of application:

DN 1/2" to 4"	PN ANSI Cl. 150/300	Temperature -10°C to 350°C
------------------	------------------------	-------------------------------

1.0 Main parts

item	designation
1	body
2	body end connection
5	ball
6	stem
8	gland washer
10	bearing cover
16	plate spring
20	sealing ring
21	seat-unit
23	body gasket
24	stem packing
25	bearing ring
26	bearing ring
28	screw
29	screw

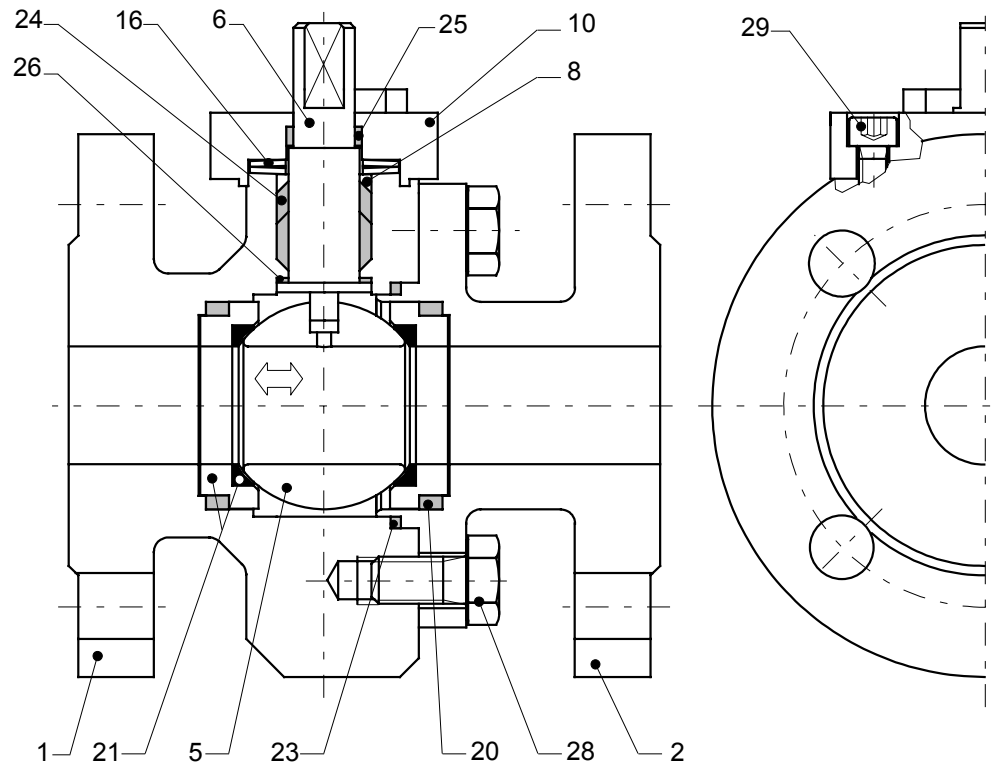


fig. 1
ball valve, series 70-C

2.0 Materials

item	designation	temperatures:	
		-10°C to 350°C ¹⁾	-10°C to 350°C ¹⁾
1	body	1.4571 / 1.4408	1.0460 / 1.0619
2	body end connection		
5	ball	1.4571 / 1.4404 / 1.4408	1.4571 / 1.4404 / 1.4408
6	stem	1.4571	1.4571
8	gland washer		
10	bearing cover		
16	plate spring	1.4568	1.8159
20	sealing ring	Graphite	Graphite
21	seat-unit	1.4571 / Carbon-Antimon	1.4571 / Carbon-Antimon
23	body gasket	Graphite	Graphite
24	stem packing		
25	bearing ring	1.0037.07	1.0037.07
26	bearing ring	Graphite with SS	Graphite with SS
28-29	screw	A 2-70	A 2-70

1) Materials for lower/higher temperatures on request..

Technical data, Series 70-S; 70-M; 70-C

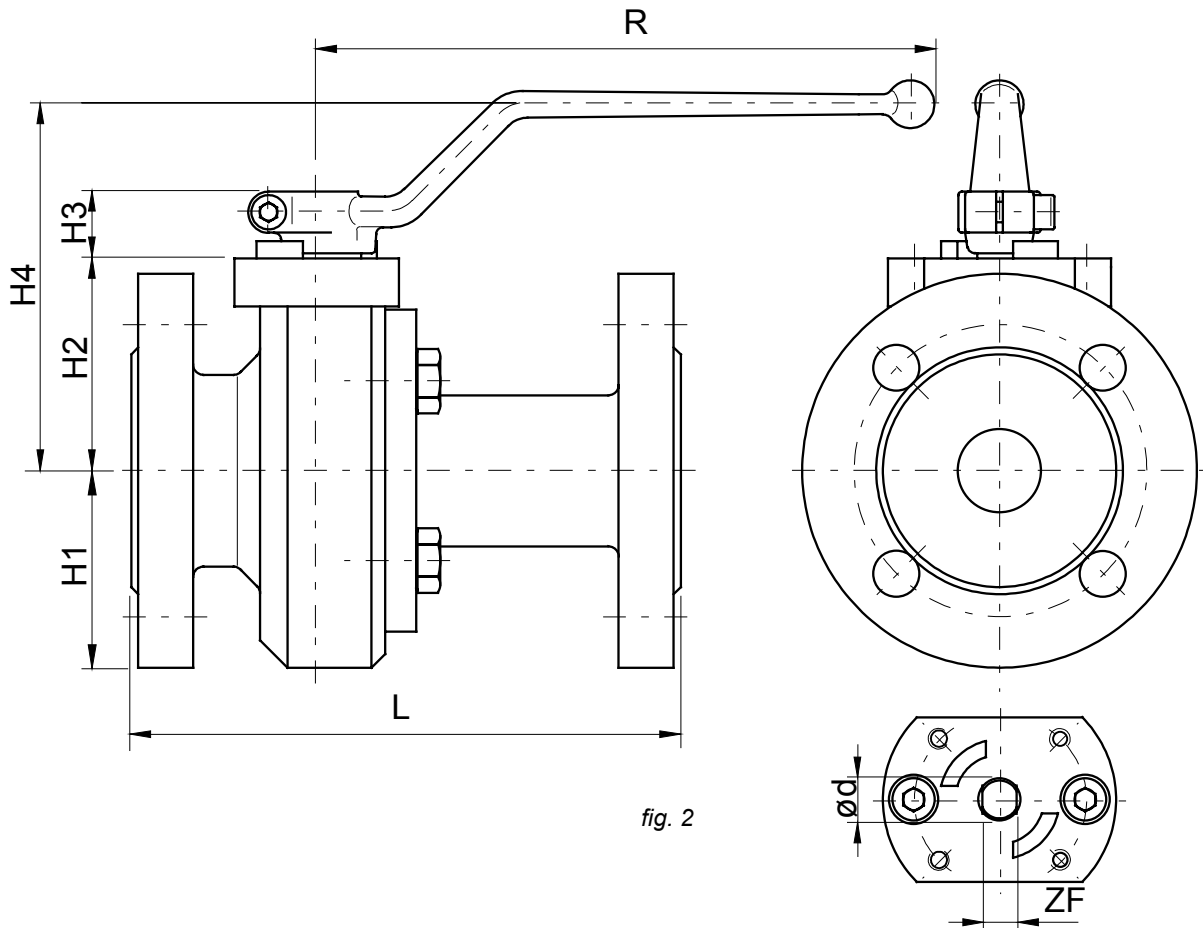
3.0 Technical data

3.1 Nominal size / Dimensions / Connections / Flow / Weights

Nominal size (DN)		dimensions							Flow K_{v100} [m ³ /h] $\Delta p=1\text{bar}$	face to face				connections	weight [kg]			actuator-connection DIN/ISO 5211				
										ANSI		DIN 558-1			Cl.150 RF/FF	Cl.300 RF/FF	FTF1		FTF27	Cl.150 RF/FF	DIN 558-1	
										L	L	L	L								FTF1	FTF27
1/2"	15	47,5	50,5	19	95	180	13	10	20	108	140	130	115	flanges to DIN 2501 or ANSI B 16.5 (other connections on request)	4,0	4,3	4,0	F 05				
3/4"	20	52,5	50,5	19	95	180	13	10	38	117	152	150	120		5,5	6,0	5,5	F 05				
1"	25	58	62	19	106	180	13	10	65	127	165	160	125		6,0	6,8	6,0	F 05				
1 1/4"	32	70	67,5	19	112	180	13	10	117	140	178	180	130		10,1	11,0	10,0	F 05				
1 1/2"	40	75	80,5	23	126	300	17	12	196	165	190	200	140		13,3	13,7	12,9	F 07				
2"	50	83	89	23	134	300	17	12	325	178	216	230	150		15,0	18,0	14,6	F 07				
2 1/2"	65	92,5	99	23	144	300	17	12	598	190	241	290	170		25,0	26,5	24,5	F 07				
3"	80	105	125	28	153	450	27	18	960	203	283	310	180		34,5	43,5	30,0	F 10				
4"	100	120	140	28	168	450	27	18	1650	229	305	350	190		44,0	56,0	38,0	F 10				

dimensions in mm

Technical modifications are reserved.



3.2 Special features

profit:

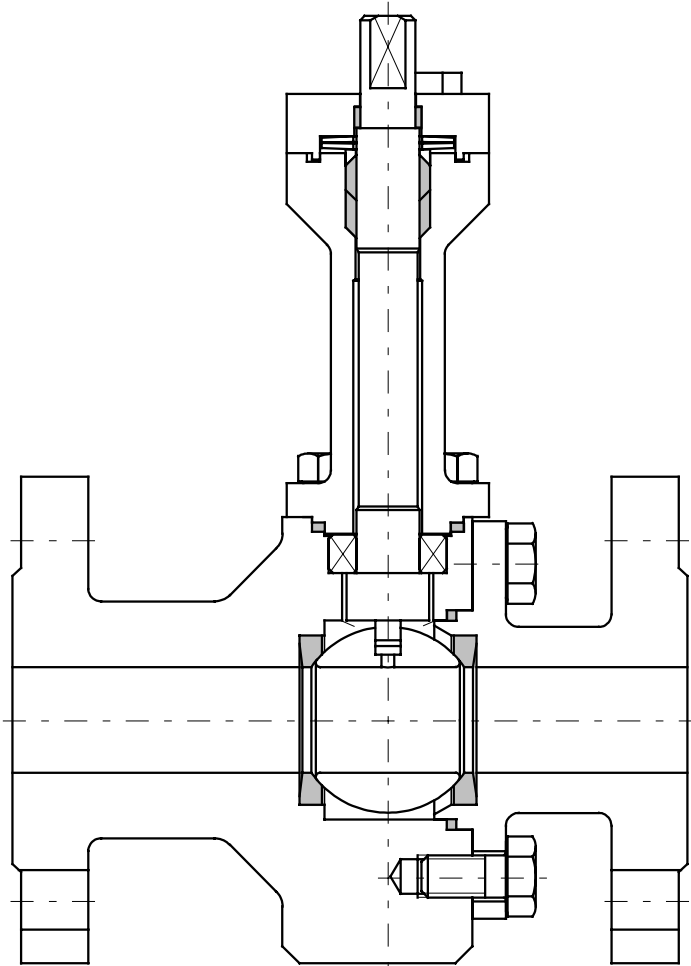
- ready to take actuator
- minimal abrasion
- standard connections
- constant torque
- minimal maintenance

design:

- two piece body
- floating ball
- no welds
- anti blowout proof stem
- live loaded stem packing

Two-Way Ball Valve Series 70-K

DN 1/2" to 4"



Description:

This PERRIN ball valve design features a two piece body, a insulation extension and a floating, seat supported ball. The stem packing is spring loaded, the seat rings with pressure relief warranty are pre-loaded.

The actuator mounting flange corresponds to the NAMUR recommendations with dimensions to DIN/ISO 5211.

Stem extensions, locking devices and actuators with accessoires can be field mounted at any time.

The ball valve is extradited in antistatic-design, with anti blowout proof stem and, as desired, in " fire-safe design". The stem packing has examined TA-Luft.

Range of application:

DN 1/2" to 4"	PN ANSI Cl. 150/300	Temperature -160°C to 160°C
------------------	------------------------	--------------------------------

1.0 Main parts

item	designation
1	body
2	body end connection
5	ball
6	stem
8	gland washer
10	bearing cover
11	extension
16	plate spring
21	seat ring
23	body gasket
24	stem packing
25	bearing ring
26	bearing
27	body gasket
28	screw
29	screw
30	screw

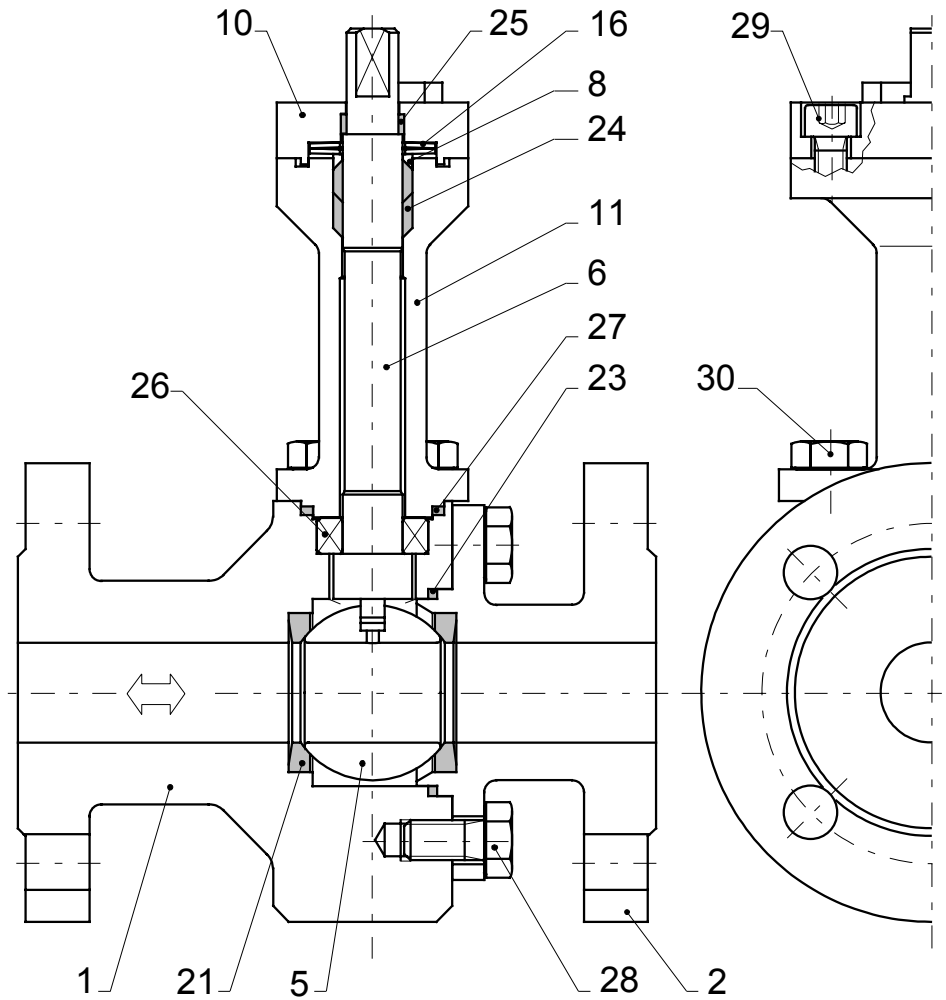


fig. 1
ball valve, series 70-K

2.0 Materials

item	designation	temperatures:		
		-100°C to 100°C ¹⁾	-60°C to 100°C ¹⁾	-160°C to 160°C ¹⁾
1	body	1.4571	1.0566	
2	body end connection			
5	ball	1.4571	1.4571	
6	stem	1.4571	1.4571	
8	gland washer			
10	bearing cover			
11	extension			
16	plate spring	1.4568	1.4568	
21	seat ring	PCTFE	PCTFE	TFM 1600
23	body gasket	PTFE - TFM	PTFE - TFM	
24	stem packing	PTFE - Graphite	PTFE - Graphite	
25	bearing ring	PTFE - 25% Glass	PTFE - 25% Glass	
26	bearing	PEEK	PEEK	
27	body gasket	PTFE - TFM	PTFE - TFM	
28-30	screw	A 2-70	A 2-70	

1) Materials for lower/higher temperatures on request..

3.0 Technical data

3.1 Nominal size / Dimensions / Connections / Flow / Weights

Nominal size (DN)		dimensions							flow k_{v100} [m ³ /h] $\Delta p=1\text{bar}$	face to face				connections	weight [kg]			actuator-connection DIN/ISO 5211
										ANSI		DIN 558-1			ANSI Cl.150 RF/FF	DIN 558-1 FTF1	DIN 558-1 FTF27	
		H1	H2	H3	H4	R	ϕd	ZF		L	L	L	L					
1/2"	15	47,5	37	100	181	180	13	10	20	108	140	130	115	flanges to DIN 2501 or ANSI B 16.5 (other connections on request)	4,7	5,1	4,7	F 05
3/4"	20	52,5	37	100	181	180	13	10	38	117	152	150	120		6,2	6,7	6,2	F 05
1"	25	58	48	100	192	180	13	10	65	127	165	160	125		6,7	7,5	6,7	F 05
1 1/4"	32	70	54	100	198	180	13	10	117	140	178	180	130		10,8	11,7	10,7	F 05
1 1/2"	40	75	60	100	204	300	17	12	196	165	190	200	140		15,0	15,4	14,6	F 07
2"	50	83	70	100	214	300	17	12	325	178	216	230	150		16,7	19,7	16,3	F 07
2 1/2"	65	92,5	81	100	225	300	17	12	598	190	241	290	170		26,7	28,2	26,2	F 07
3"	80	105	95	129	243	450	27	18	960	203	283	310	180		38,3	47,3	33,8	F 10
4"	100	120	111	129	259	450	27	18	1650	229	305	350	190		47,8	59,8	41,8	F 10

dimensions in mm

Technical modifications are reserved.

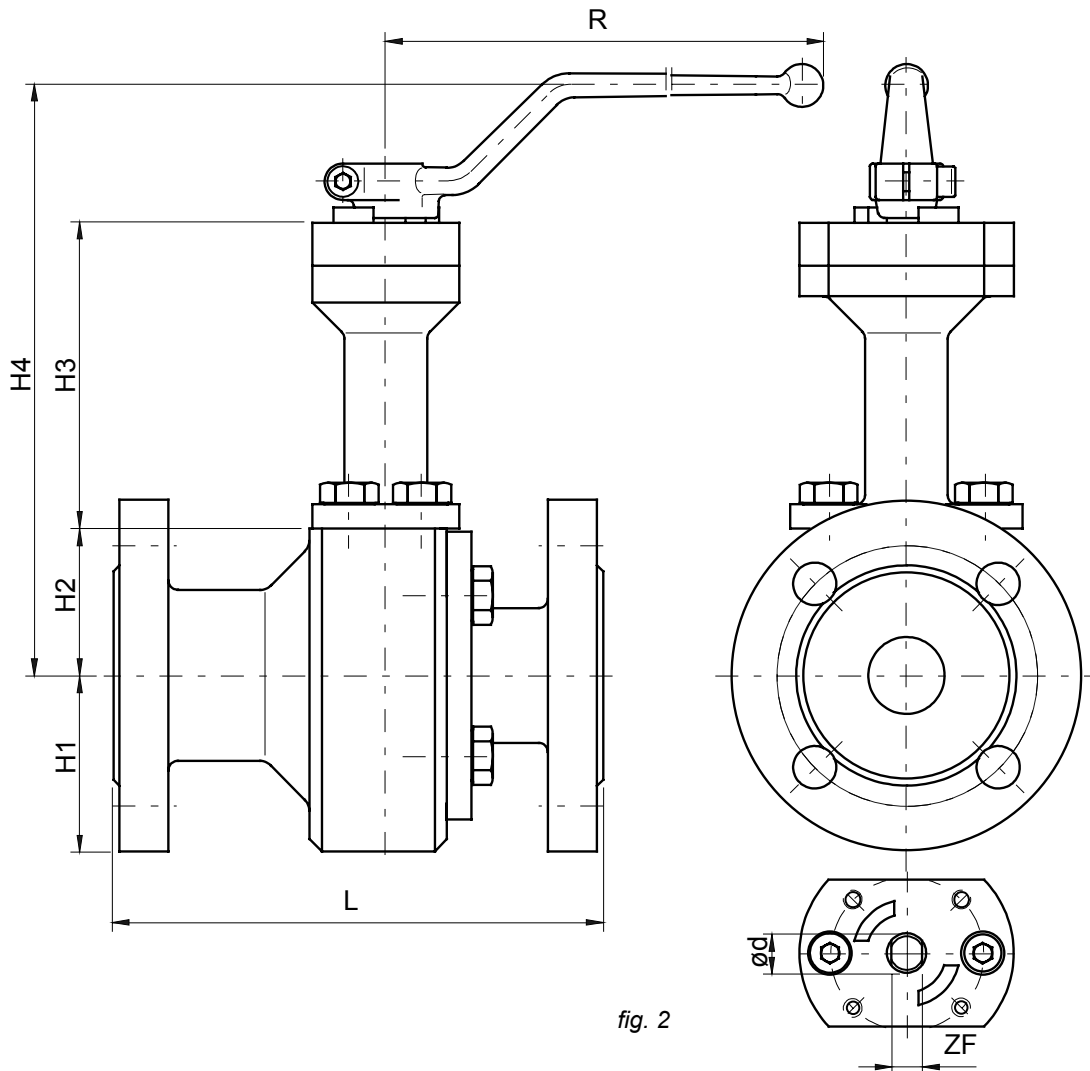


fig. 2

3.2 Special features

profit:

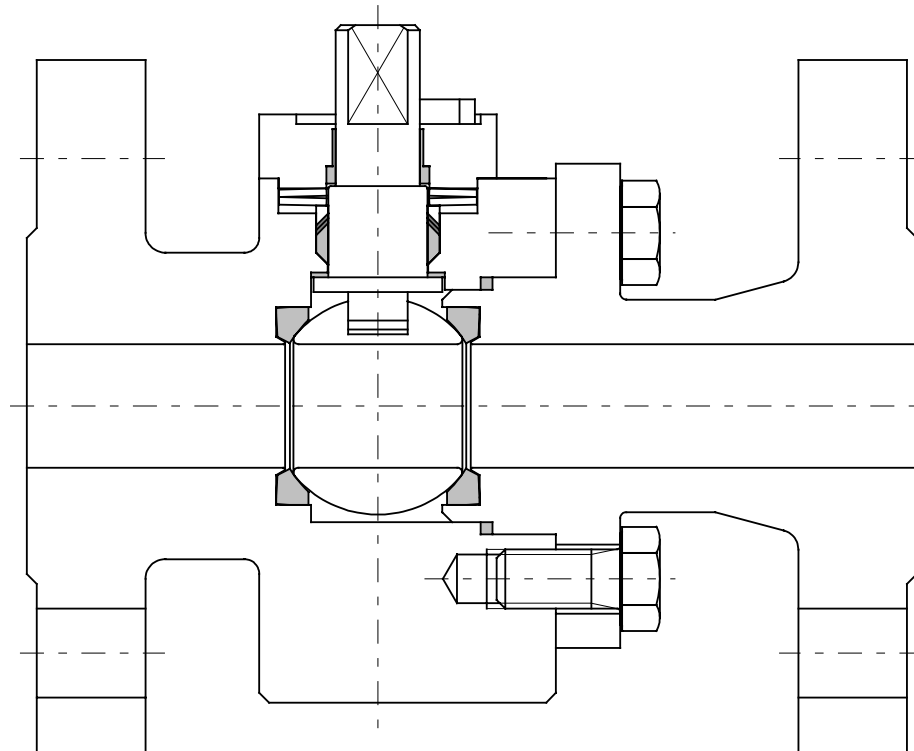
- ready to take actuator
- minimal abrasion
- standard Connections
- constant torque
- minimal maintenance

design:

- two piece body
- floating ball
- no welds
- anti blowout proof stem
- live loaded stem packing
- extension for insulation

Two-Way Ball Valve Series 70-H

DN ½" to 4"



Description:

This PERRIN ball valve design features a two piece body and a floating, seat supported ball. The stem packing is spring loaded the seat are pre-loaded.

The actuator mounting flange corresponds to the NAMUR recommendations with dimensions to DIN/ISO 5211.

Stem extensions, locking devices and actuators with accessoires can be field mounted at any time.

The ball valve is extradited in antistatic-design, with anti blowout proof stem and, as desired, " fire-safe design". The stem packing has examined TA-Luft.

Range of application:

DN ½" to 4"	PN ANSI Cl. 150/900	Temperature -40°C to 200°C
----------------	------------------------	-------------------------------

1.0 Main parts

item	designation
1	body
2	body end connection
5	ball
6	stem
8	gland washer
10	bearing cover
16	plate spring
21	seat ring
23	body gasket
24	stem packing
25	bearing bush
26	bearing ring
28	screw
29	screw

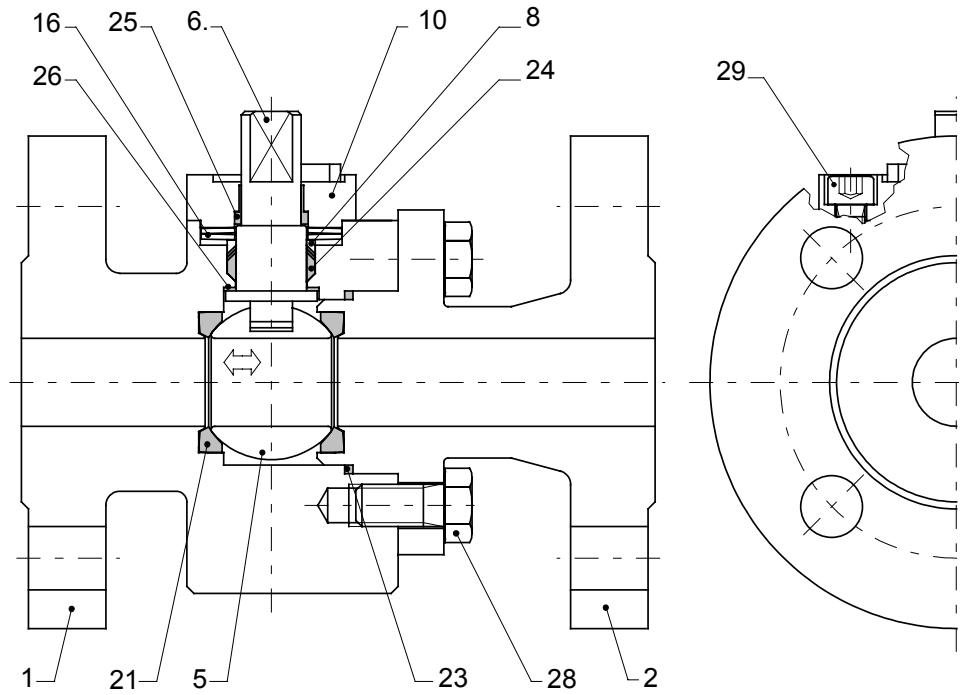


fig. 1
ball valve, series 70-H

Technical modifications are reserved.

2.0 Materials

item	designation	temperatures:	
		-40°C to 200°C ¹⁾	-10°C to 200°C ¹⁾
1	body	1.4571 / 1.4408	1.0460 / 1.0619
2	body end connection		
5	ball	1.4571 / 1.4404 / 1.4408	1.4571 / 1.4404 / 1.4408
6	stem	1.4462	1.4462
8	gland washer	1.4571	1.4571
10	bearing cover		1.0460
16	plate spring	1.4568	1.8159
21	seat ring	PTFE - TFM	PTFE - TFM
23	body gasket		
24	stem packing	PTFE - Graphite	PTFE - Graphite
25	bearing bush	PTFE - 25% Glass	PTFE - 25% Glass
26	bearing ring		
28-29	screw	A 2-70	A 2-70

1) Materials for lower/higher temperatures on request..

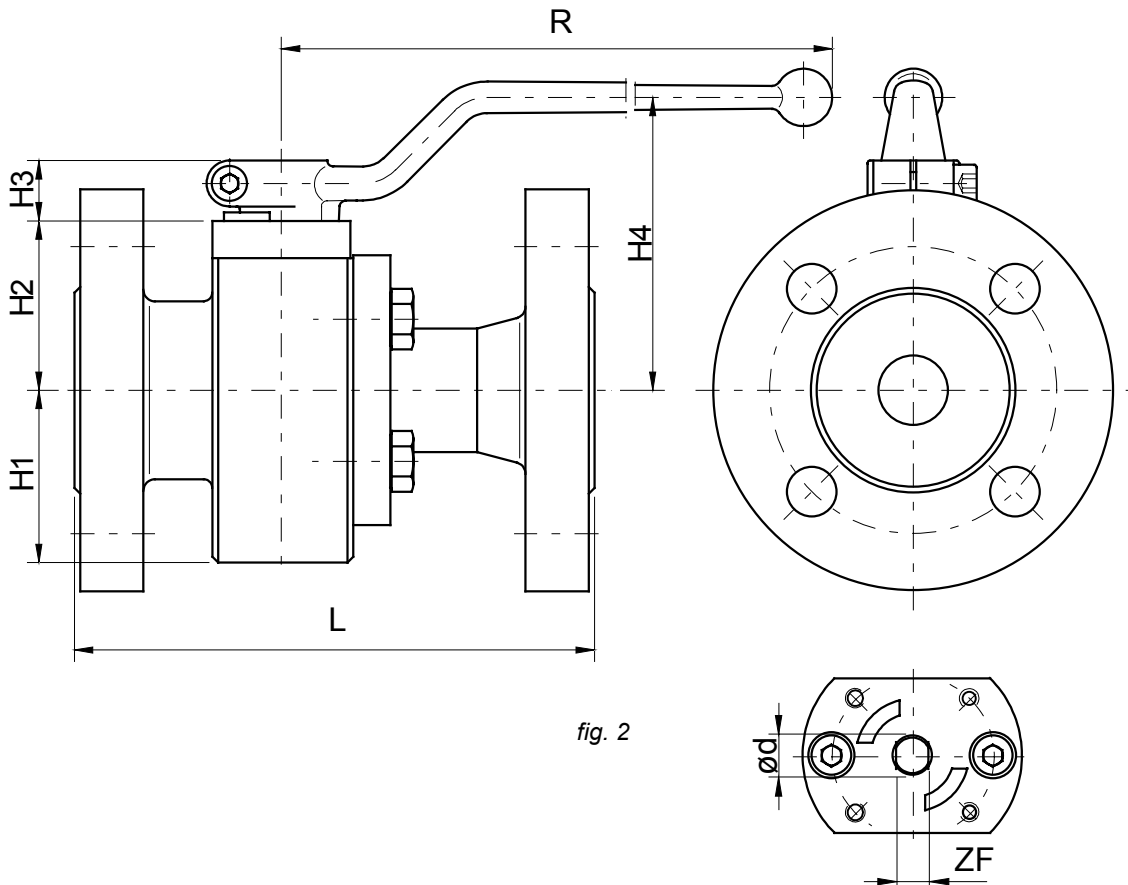
3.0 Technical data

3.1 Nominal size / Dimensions / Connections / Flow / Weights

Nominal size (DN)		dimensions							flow k_{v100} [m ³ /h] $\Delta p=1\text{bar}$	face to face		connections	weight [kg]		
										ANSI	DIN 558-1		actuator-connection DIN/ISO 5211		
		Cl.600 RF/FF	FTF2	ANSI Cl.600 RF/FF	DIN 558-1 FTF2										
1/2"	15	53	59	19	101	180	13	10	20	165	210	flanges to DIN 2501 or ANSI B 16.5 (other connections on request)	9	10	F 05
3/4"	20	62	59	21	101	300	17	12	38	190	230		10	11	F 07
1"	25	62	59	21	101	300	17	12	65	216	230		14	14	F 07
1 1/4"	32	64	88	28	108	450	27	18	117	229	260		18	19	F 10
1 1/2"	40	64	91	28	111	450	27	18	196	241	260		20	22	F 10
2"	50	78	98	28	116	450	27	18	325	292	300		28	29	F 10
2 1/2"	65	90	110	28	125	450	27	18	598	330	340		31	32	F 10
3"	80	105	138	37	170	800	43	32	960	356	380		48	49	F 12
4"	100	115	174	37	206	800	43	32	1650	432	430		63	63	F 12

dimensions in mm

Technical modifications are reserved.



3.2 Special features

profit:

- ready to take actuator
- minimal abrasion
- standard Connections
- constant torque
- minimal maintenance

design:

- two piece body
- floating ball
- no welds
- anti blowout proof stem
- live loaded stem packing