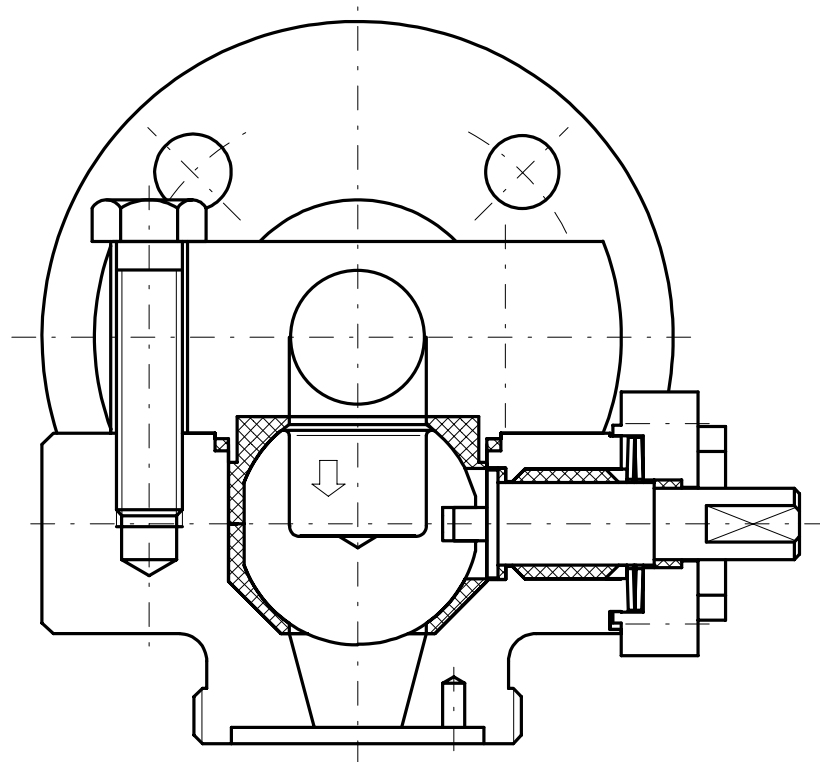


Sampling Valve Series 71-S

for pipes systems
from DN 1/2" to 6"



Description:

This PERRIN ball valve design features a two piece body, a floating, seat supported ball with pocket hole, a compact seat system and a universal-connection for different sampling-systems with integrated air vent. The stem packing is spring loaded.

The stem packing has examined TA-Luft (Air Act). The ball valve is extradited in antistatic-design and with anti blowout proof stem.

Stem extensions, locking devices and actuators with accessoires can be field mounted at any time. The mounting flange corresponds to the NAMUR recommendations with dimensions to DIN/ISO 5211.

1.0 Main Parts

Item	designation
1	pipe-body
2	valve-body
5	ball
6	stem
8	gland washer
10	bearing cover
16	plate spring
21	half-shade seat
22	half-shade seat
23	body gasket
24	stem packing
25	bearing ring
26	bearing ring
28	screw
29	screw

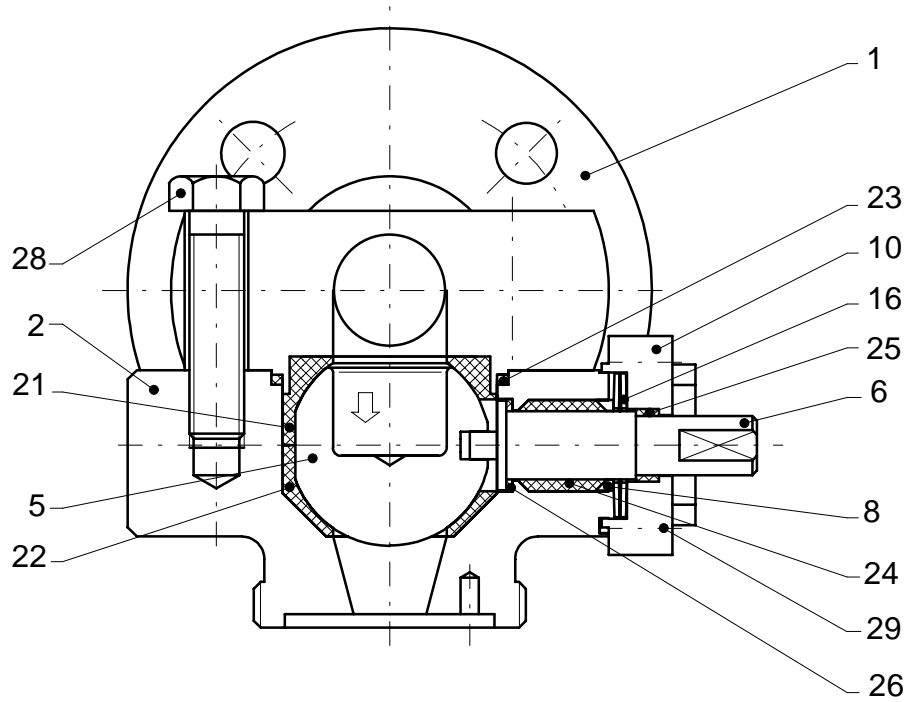


fig. 1
sampling valve, series 71-S

Technical modifications are reserved.

2.0 Materials

item	designation	temperatures:	
		-40°C to 200°C	-10°C to 200°C
1	pipe-body	1.4571 / 1.4408	1.0460 / 1.0619
2	valve-body		
5	ball	1.4571 / 1.4404 / 1.4408	1.4571 / 1.4404 / 1.4408
6	stem	1.4571	1.4571
8	gland washer		
10	bearing cover		
16	plate spring	1.4310	1.8159
21-22	half-shade seat	PTFE - TFM	PTFE - TFM
23	body gasket		
24	stem packing	PTFE - Graphite	PTFE - Graphite
25-26	bearing ring	PTFE - 25% Glass	PTFE - 25% Glass
28-29	screw	A 2-70	A 2-70

Designs for lower/higher temperatures and special materials (f.ex. Titanium, Hastelloy) on request.

3.0 Technical Data

3.1 Nominal size / Dimensions / Connections / Weights

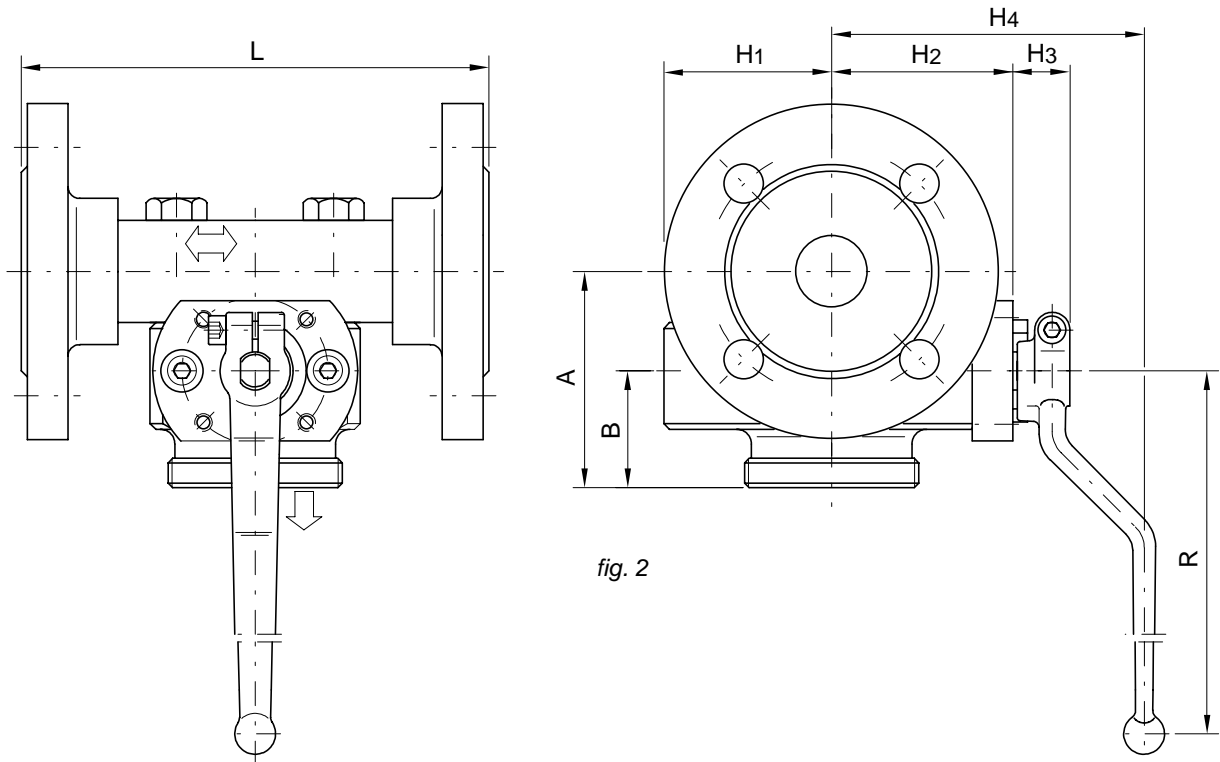
nominal pipe size (DN)		dimensions							sampling-volume [ml] ¹⁾	face to face			connections (pipe-system)	weight [kg]			actuator connection DIN/ISO 5211	
										ANSI ²⁾		DIN 558-1		ANSI RF/FF	DIN 558-1			
		Cl.300 RF/FF	FTF1	FTF1	FTF27	FTF1	FTF27											
1"	25	74	40	58	62	19	106	180	20		L	L	--	flanges to DIN 2501 or ANSI B 16.5		6,8	--	F05
2"	50	133	69	83	62	19	106	180	60		L	L	--			18,0	--	F05 / F07
3"	80	149	69	100	89	23	134	300	60		L	L	--			43,5	--	
4"	100	159	69	118	89	23	134	300	60		L	L	--			56,0	--	

dimensions in mm

¹⁾ Lower sampling-volumes acc. to customers specification, higher on request.

²⁾ face to face dim. valid for ANSI Class 150 and 300.

Technical modifications are reserved.



3.2 Range of application:

DN (pipe size) 1/2" to 6"	PN ANSI Cl. 150/300	Temperature -40°C to 200°C
------------------------------	------------------------	-------------------------------

Alternate sizes, pressure- and temperature-ranges on request.

3.3 Special features

profit:

- ready to take actuator
- minimal abrasion
- standard connections
- constant torque
- minimal maintenance

design:

- two piece body
- floating ball
- no welds
- anti blowout proof stem
- live loaded stem packing

4.0 Accessories

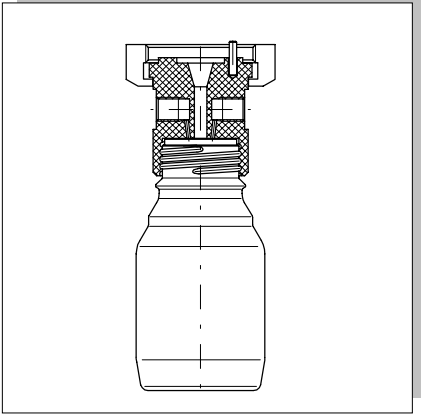


fig. 3
adapter for thread connection GL45
in PTFE or SS

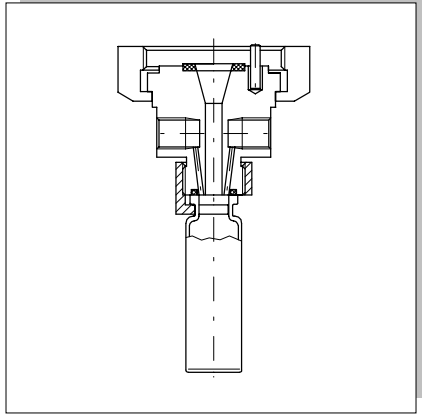


fig. 4
adapter with connection for
septic-bottle

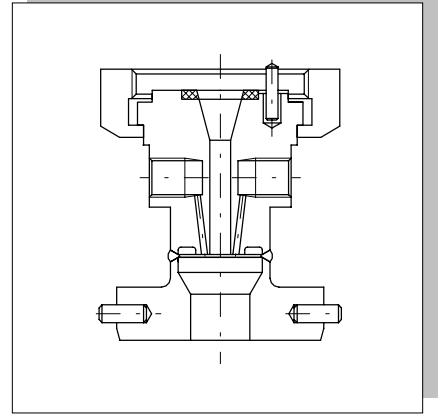


fig. 5
adapter for pick-up case

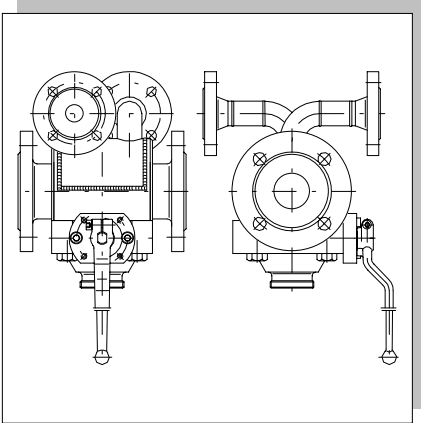


fig. 6
heating- / cooling-jacket

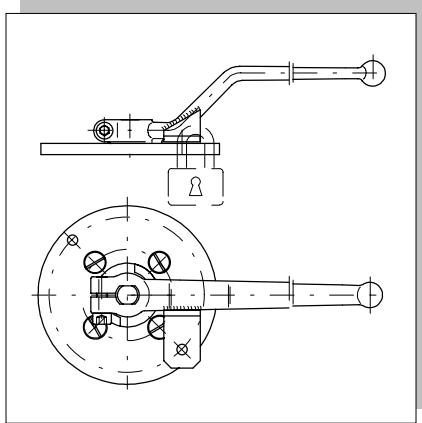


fig. 7
locking device

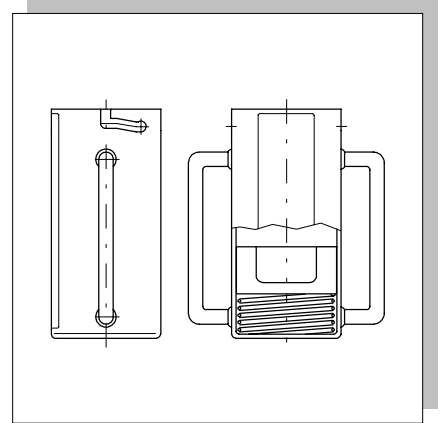


fig. 8
pick-up case