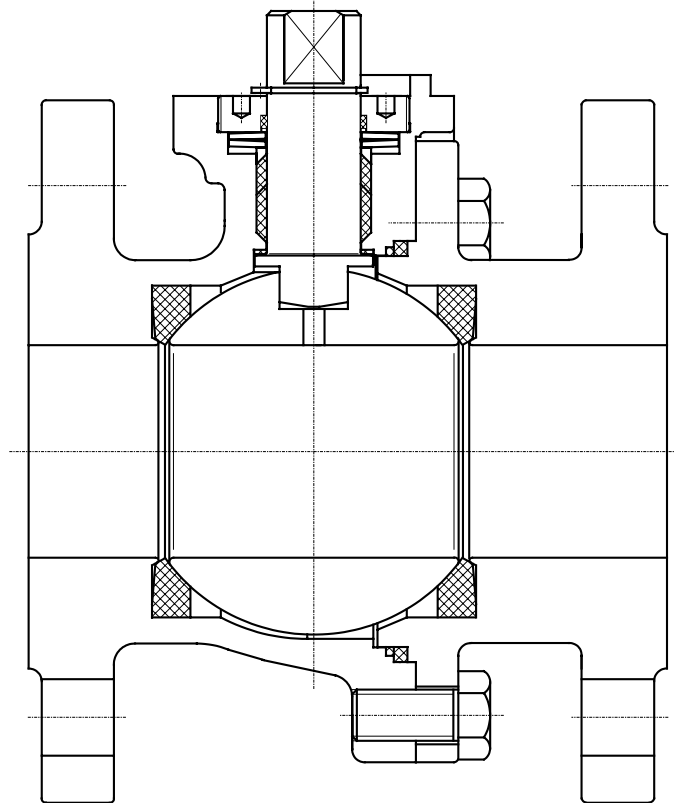


# Two-Way Ball Valve Series 75-S

DN 1/2" to 6"



## Description:

This PERRIN ball valve design features a two piece body and a floating, seat supported ball. The stem packing is spring loaded the seat rings with pressure relief warranty are pre-loaded.

The actuator mounting flange corresponds to the NAMUR recommendations with dimensions to DIN/EN/ISO 5211.

Stem extensions, locking devices and actuators with accessoires can be field mounted at any time.

The stem-connection-dimension can be supplied acc. to DIN/EN/ISO 5211 : 2001 or acc. to the BASF-Standard WN 14-003.

The ball valve is extradited in antistatic-design, with anti blowout proof stem acc. to EN736-3 and, as desired, " fire-safe" tested. The stem packing has examined TA-Luft.

## Range of application:

DN 1/2" to 6"	PN ANSI Class 150	Temperatures -60°C to +200°C
------------------	----------------------	---------------------------------

## 1.0 Main parts

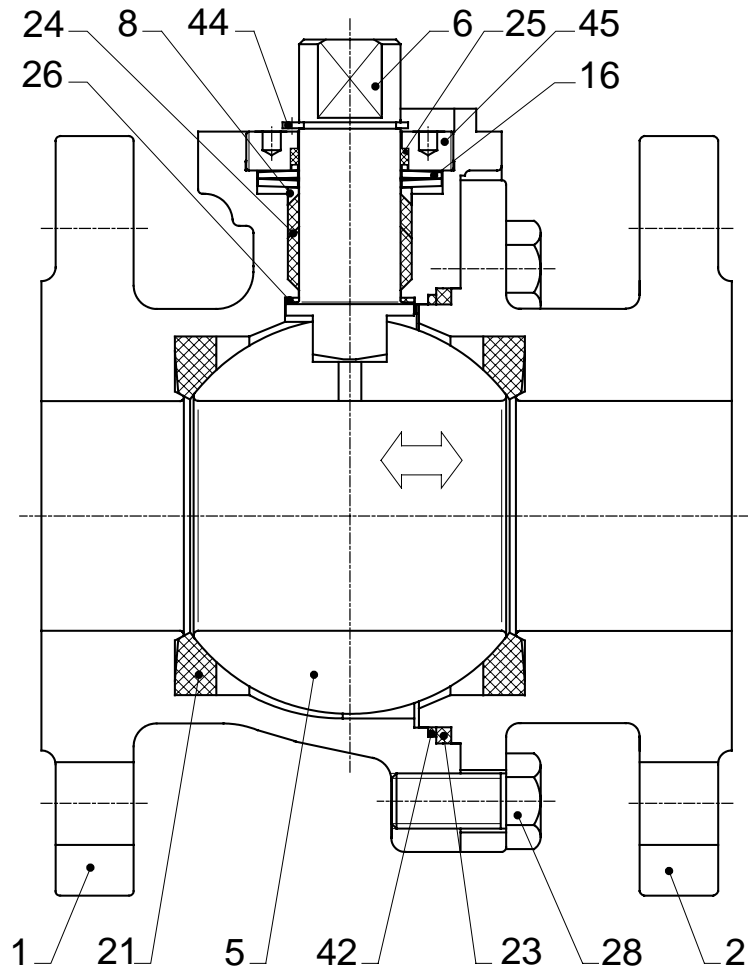


fig. 1  
ball valve, series 75-S

Technical modifications are reserved.

item	designation	temperatures:	
		-60°C to +200°C	-10°C to +200°C
1	body	1.4408	1.0619
2	body end connection		
5	ball	1.4571 / 1.4404 / 1.4408	1.4571 / 1.4404 / 1.4408
6	stem	1.4462 / 1.4571	1.4462 / 1.4571
8	gland washer	1.4571	1.4571
16	plate spring	1.4310	1.4310
21	seat ring	PTFE - TFM	PTFE - TFM
23	body gasket	Graphite	Graphite
24	stem packing	PTFE - Graphite	PTFE - Graphite
25	bearing ring	Graphite	Graphite
26	bearing ring	PTFE - 25% Glass	PTFE - 25% Glass
28	screw	A 2-70	A 2-70
42	body gasket	PTFE - 25% Glass	PTFE - 25% Glass
44	locking ring	A 2	A 2
45	threaded ring	1.4571	1.4571

## 2.0 Technical data

### 2.1 Nominal size / Dimensions / Connections / Flow / Weights

nominal size (DN)		dimensions											Flow $K_{v100}$ [m <sup>3</sup> /h] $\Delta p=1\text{bar}$	face to face		connections	weight [kg]		actuator-connection DIN/ISO 5211
														ANSI	DIN		Cl. 150 RF/FF	FTF27	
		L	L																
1/2"	15	40,5	47,5	19	84	180	18	14	14	18	14	14	20	108	115	flanges to DIN 2501 or ANSI B 16.5 (other connections on request)	3	3	F 05
3/4"	20	40,5	47,5	19	84	180	18	14	14	18	14	14	38	117	120		4	4	F 05
1"	25	47	50	19	87	180	18	14	14	18	14	14	65	127	125		5	5	F 05
1 1/4"	32	53	55,5	19	92	180	18	14	14	18	14	14	117	140	130		7	7	F 05
1 1/2"	40	66	75,5	20	120	300	22	17	17	22	17	17	196	165	140		10	10	F 07
2"	50	73	83,5	20	128	300	22	17	17	22	17	17	325	178	150		13	12	F 07
2 1/2"	65	84	94	20	139	300	22	17	17	22	17	17	598	190	170		19	18	F 07
3"	80	91	113	22	177	450	28	22	22	26	19	19	960	203	180		22	22	F 10
4"	100	107	127	22	191	450	28	22	22	26	19	19	1650	229	190		31	30	F 10
5"	125	135	161	27	188	700	36	27	27	33	24	24	2720	381	325		51	49	F 12
6"	150	156	180	40	220	700	48	36	36	42	30	30	4200	394	350	80	78	F 14	

dimensions in mm

Technical modifications are reserved.

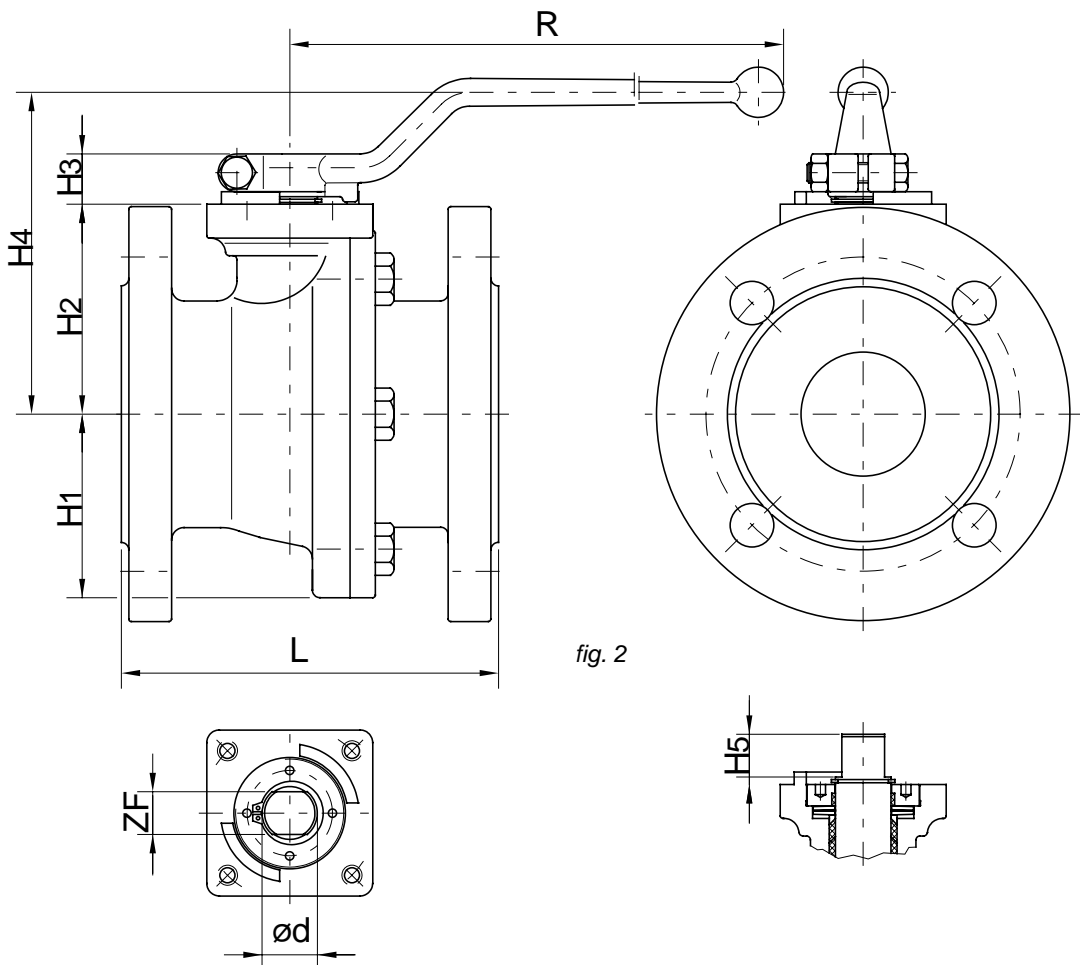


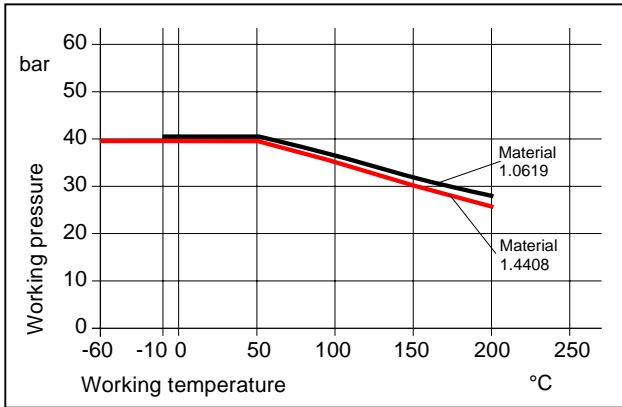
fig. 2

## 2.2 Special features

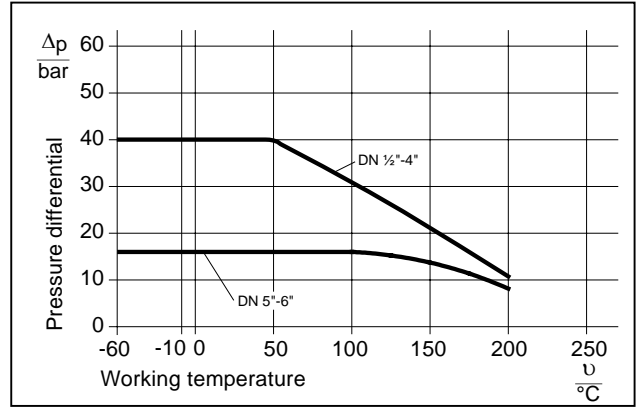
design:

- two piece body
- floating ball
- no welds
- anti blowout proof stem
- live loaded stem packing

### 2.3 Pressure-temperature-diagram body



### 2.4 Pressure-temperature-diagram seat / TFM 1600



Technical modifications are reserved.