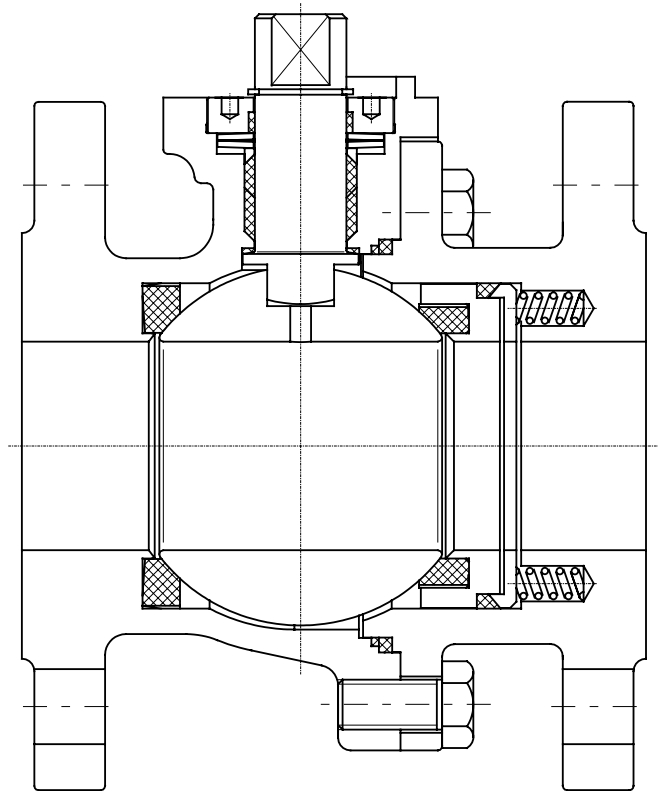


Two-Way Ball Valve Series 85-S

DN 1/2" to 6"



Description:

This PERRIN ball valve design features a two piece body and a floating, seat supported ball. The seat system with pressure relief warranty and the stem packing are spring loaded, resulting in very good sealing properties not influenced by temperature fluctuations as well at vacuum service.

The actuator mounting flange corresponds to the NAMUR recommendations with dimensions to DIN/EN/ISO 5211.

Stem extensions, locking devices and actuators with accessoires can be field mounted at any time.

The stem-connection-dimension can be supplied acc. to DIN/EN/ISO 5211 or acc. to the BASF-Standard WN 14-003.

The ball valve is extruded in antistatic-design, with anti blowout proof stem acc. to EN736-3 and, as desired, " fire-safe " tested. The stem packing has examined TA-Luft.

Range of application:

DN 1/2" to 6"	PN ANSI Class 150	Temperatures -60°C to +250°C
------------------	----------------------	---------------------------------

1.0 Main parts

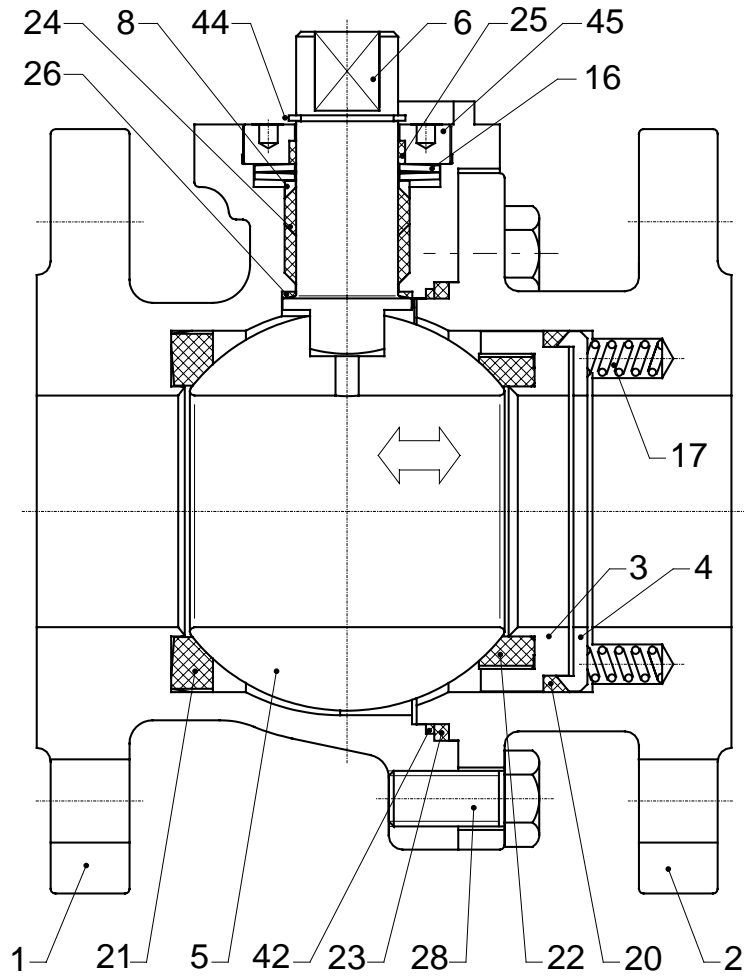


fig. 1
ball valve, series 85-S

Technical modifications are reserved.

item	designation	temperatures:	
		-60°C to +250°C	-10°C to +250°C
1	body	1.4408	1.0619
2	body end connection		
3-4	retainer ring	1.4571	1.4571
5	ball	1.4571 / 1.4404 / 1.4408	1.4571 / 1.4404 / 1.4408
6	stem	1.4462 / 1.4571	1.4462 / 1.4571
8	gland washer	1.4571	1.4571
16	plate spring	1.4310	1.4310
17	coil spring	1.4571	1.4571
21-22	seat ring	PTFE - TFM	PTFE - TFM
20	sealing ring		
23	body gasket	Graphite	Graphite
24	stem packing	PTFE - Graphite	PTFE - Graphite
25	bearing ring	Graphite	Graphite
26	bearing ring	PTFE - 25% Glass	PTFE - 25% Glass
28	screw	A 2-70	A 2-70
42	body gasket	PTFE - 25% Glass	PTFE - 25% Glass
44	locking ring	A 2	A 2
45	threaded ring	1.4571	1.4571

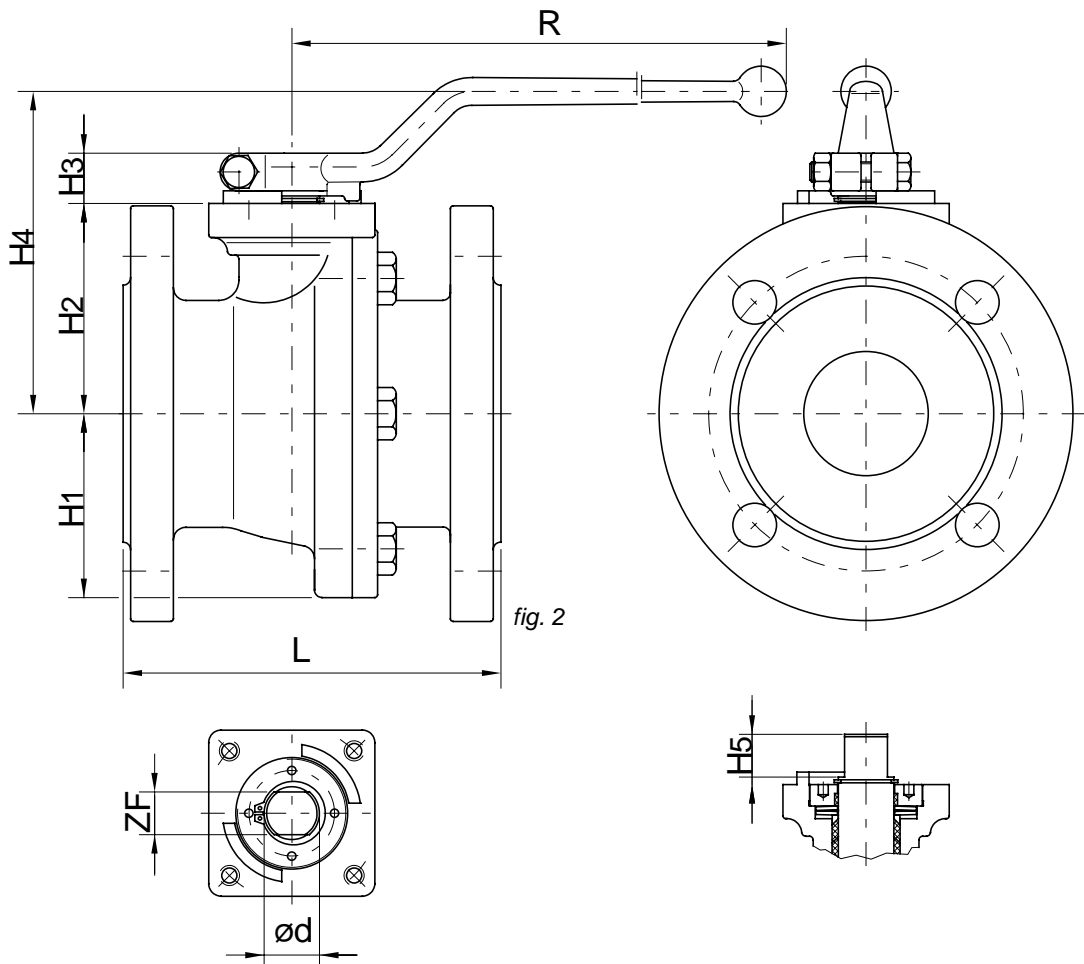
2.0 Technical data

2.1 Nominal size / Dimensions / Connections / Flow / Weights

nominal size (DN)		dimensions											flow k_{v100} [m ³ /h] $\Delta p=1\text{bar}$	face to face		connections	weight [kg]		actuator-connection DIN/ISO 5211
														EN-Standard					
		H1	H2	H3	H4	R	$\varnothing d$	ZF	H5	$\varnothing d$	ZF	H5		Cl. 150 RF/FF	L				
1/2"	15	40,5	47,5	19	84	180	18	14	14	18	14	14	20	108	flanges to DIN 2501 or ANSI B 16.5 (other connections on request)	3		F 05	
3/4"	20	40,5	47,5	19	84	180	18	14	14	18	14	14	38	117		4		F 05	
1"	25	47	50	19	87	180	18	14	14	18	14	14	65	127		5		F 05	
1 1/4"	32	53	55,5	19	92	180	18	14	14	18	14	14	117	140		7		F 05	
1 1/2"	40	66	75,5	20	120	300	22	17	17	22	17	17	196	165		10		F 07	
2"	50	73	83,5	20	128	300	22	17	17	22	17	17	325	178		12		F 07	
2 1/2"	65	84	94	20	139	300	22	17	17	22	17	17	598	190		18		F 07	
3"	80	91	113	22	177	450	28	22	22	26	19	19	960	203		22		F 10	
4"	100	107	127	22	191	450	28	22	22	26	19	19	1650	229		30		F 10	
5"	125	135	161	27	188	700	36	27	27	33	24	24	2720	381		49		F 12	
6"	150	156	180	40	220	700	48	36	36	42	30	30	4200	394	78		F 14		

dimensions in mm

Technical modifications are reserved.

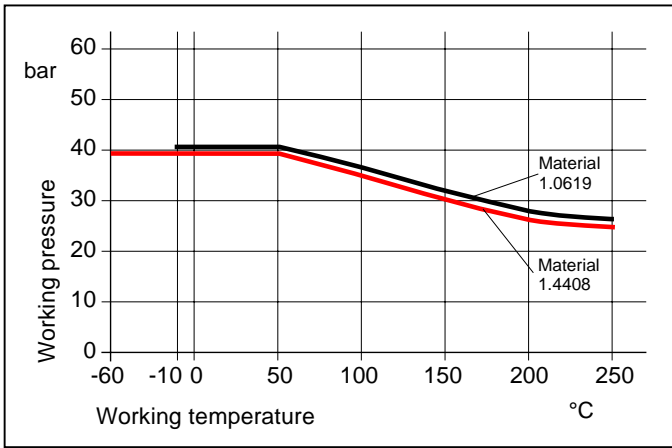


2.2 Special features

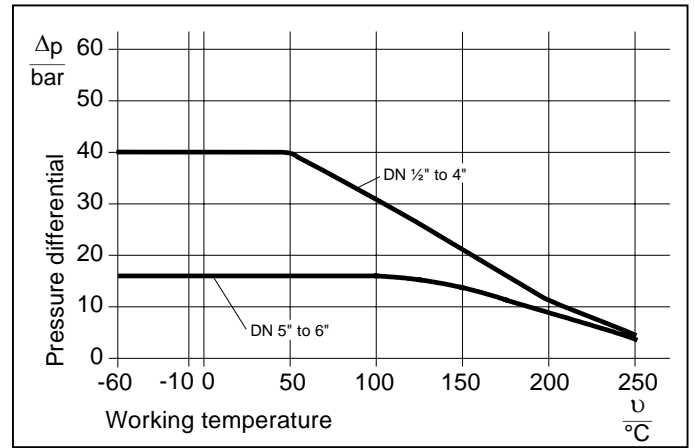
design:

- two piece body
- floating ball
- no welds
- anti blowout proof stem
- live loaded stem packing
- spring loaded seat system

2.3 Pressure-temperature-diagram body



2.4 Pressure-temperature-diagram seat / TFM 1600



Technical modifications are reserved.

PERRIN GmbH

Siemensstraße 1 • 61130 Nidderau, Germany • ☎(0 61 87) 9 28-0 • Fax: (0 61 87) 9 28-2 51 • E-Mail: postoffice@perrin.de