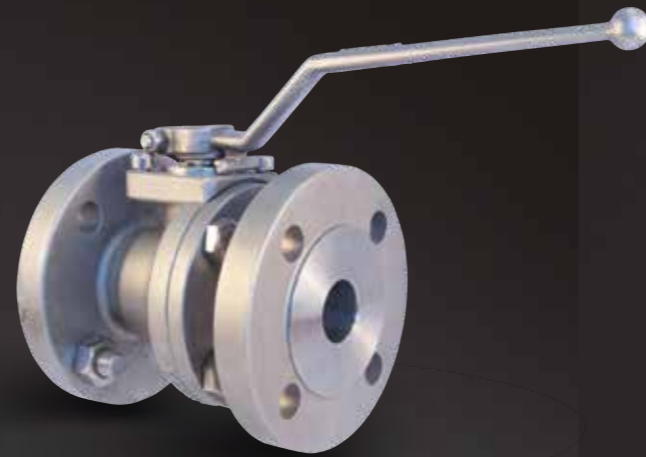


2-WAY BALL VALVES FLOATING BALL

soft sealing | metal sealing | carbon sealing

DN: 15 (1/2") to DN 600 (24")
PN (Class): 10 (150) to 420 (2500)
Temp.: min. -196°C to max.+600°C



The 2-way Ball Valves with a floating ball are designed with a 2 or 3-part body. The floating ball design creates tightness on the downstream side, which keeps increasing as the up-stream pressure continues to rise.

→ DIN

Type	DN	PN	Body	Body mat.	Spring seats	Temperature	Application examples
11	15 - 150	10 - 40	3-piece	as required	n.a.	-60°C to +200°C	nuclear power
70	15 - 300	10 - 420	2-piece	as required	n.a.	-160°C to +450°C	PTA / pharma
75	15 - 150	10 - 40	2-piece	precision casting	n.a.	-60°C to +450°C	general chemical
80	15 - 300	10 - 420	2-piece	as required	on one side	-196°C to +600°C	vacuum
85	15 - 150	10 - 40	2-piece	precision casting	on one side	-60°C to +450°C	vacuum
88	50 - 600	16 - 420	2-piece	as required	on both sides	-60°C to +450°C	mining / media containing solids

→ ANSI

Type	DN	Cl.	Body	Body mat.	Spring seats	Temperature	Application examples
11	15 - 150	150 - 300	3-piece	as required	n.a.	-60°C to +200°C	nuclear power
70	1/2" - 12"	150 - 2500	2-piece	as required	n.a.	-160°C to +450°C	PTA / pharma
75	1/2" - 6"	150 - 300	2-piece	precision casting	n.a.	-60°C to +450°C	general chemical
80	1/2" - 12"	150 - 2500	2-piece	as required	on one side	-196°C to +600°C	vacuum
85	1/2" - 6"	150 - 300	2-piece	precision casting	on one side	-60°C to +450°C	vacuum
88	2" - 24"	150 - 2500	2-piece	as required	on both sides	-60°C to +450°C	mining / media containing solids

2-WAY BALL VALVES TRUNNION MOUNTED BALL

soft sealing | metal sealing | metering Ball Valve

DN: 15 (1/2") to DN 600 (24")
PN (Class): 10 (150) to 420 (2500)
Temp.: min. -196°C to max.+800°C



The trunnion mounted 2-way Ball Valves are equipped with 2 or 3-component body. Spring-loaded seats are used for sealing. Due to the absorption of force by the trunnion and stem the trunnion mounted Ball Valve not only has less torque than the floating versions, but is also suitable for larger sizes and higher pressure levels. In the standard version these are sealed on the upstream side and if required can be supplied as a „double block and bleed (DBB)“ or „double insulation and bleed (DIB)“ version.

→ DIN

Type	DN	PN	Body	Body mat.	Spring seats	Temperature	Application examples
14	25 - 600	10 - 420	2-/3-piece	as required	on both sides	-196°C to +800°C	all-round
15	15 - 300	10 - 40	2-piece	as required	on one side	-60°C to +450°C	bottom drain
16	15 - 300	10 - 250	3-piece	as required	on both sides	-60°C to +450°C	high switching frequency (1 million / year)
17	15 - 500	10 - 100	top entry	as required	on one side	-196°C to +450°C	LNG
19	1/4" - 9/16"	max. 103 Mpa	3-piece	stainless steel	on both sides	-50°C to +85°C	hydrogen

→ ANSI

Type	DN	Cl.	Body	Body mat.	Spring seats	Temperature	Application examples
14	1" - 24"	150 - 2500	2-/3-piece	as required	on both sides	-196°C to +800°C	all-round
15	1/2" - 12"	150 - 300	2-piece	as required	on one side	-60°C to +450°C	bottom drain
16	1/2" - 12"	150 - 1500	3-piece	as required	on both sides	-60°C to +450°C	high switching frequency (1 million / year)
17	1/2" - 20"	150 - 600	top entry	as required	on one side	-196°C to +450°C	LNG
19	1/4" - 9/16"	max. 103 Mpa	3-piece	stainless steel	on both sides	-50°C to +85°C	hydrogen